



T-Bar - Quick Start Guide

Overview

T-Bar is a simple program which places a transparent colored bar onto the computer screen to aid in reading. The insertion of reading lines within the bar as well as the size of the bar, its color and its transparency are easily adjusted.

To Use

Double click on the shortcut T-Bar icon on the desktop or go to the Start Menu and select T-Bar.

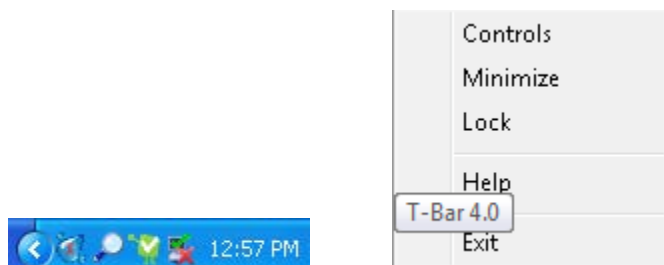


T-Bar

When T-Bar opens, a transparent colored bar will appear on the screen. The settings will remain the same from your previous session. The colored bar can be moved by dragging it with the mouse. The colored bar, or T-Bar, can be placed over reading material for ease of reading, however this overlay blocks material below the overlay from being selected, such as a hyperlink for example.

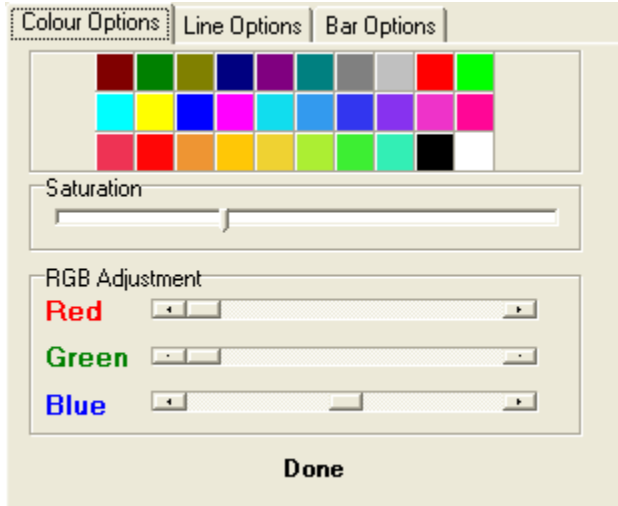
Some Common Settings

For options on customizing the T-Bar, right click on the T-Bar icon in the Windows taskbar at the bottom right of the computer screen, then select **Controls**.

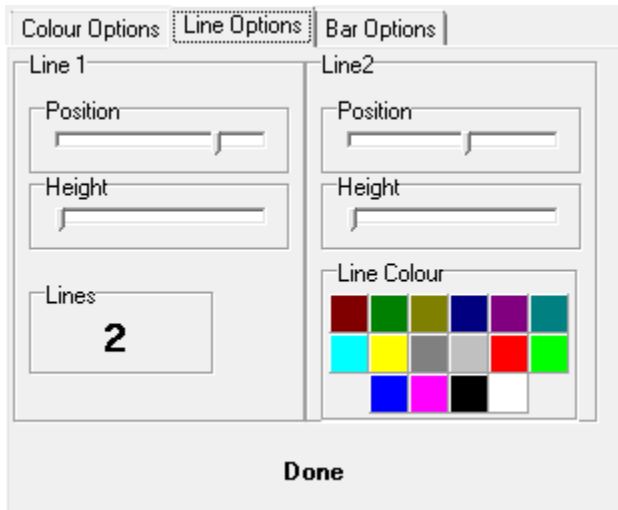


There are three tabs in the Controls menu: Colour Options, Line Options, and Bar Options. Colour Options allows you to customize the color and transparency of the bar. Line Options allows you to add one or two reading lines to assist with tracking while reading. Bar Options allows you to adjust the height and width of your bar.

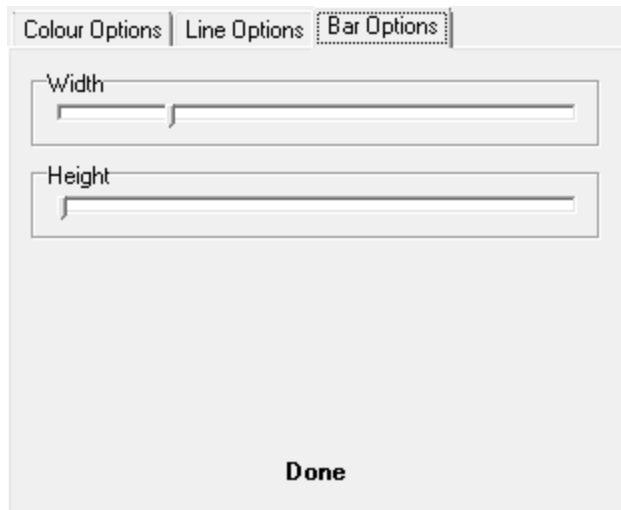
To adjust the color and transparency of the bar, click on the **Colour Options** tab. Select a color from the color palette. Click and drag the **Saturation** slider to adjust the transparency of the bar. To modify the hue of your selected color, click and drag the **RGB Adjustment** sliders for Red, Green, and Blue.



To add lines to the bar to assist in tracking while reading, click on the **Line Options** tab. To add lines, click on the number under **Lines**. The options will toggle through 0, 1, or 2 lines for each click. Select a color from the palette for the lines. The position of the lines as well as the line width can be modified clicking and dragging the sliders.



To adjust the height and width of the T-Bar itself, select the **Bar Options** tab. Click and drag the height and width sliders until the desired size of the T-Bar is reached.



When you have finished adjusting the look of the T-Bar, click **Done** to apply the settings.

To minimize T-Bar, right click the T-Bar icon in the Windows taskbar and select **Minimize**. The T-Bar will hide until the icon in the Windows taskbar is double-clicked.

T-Bar allows you to attach to the T-Bar to the mouse cursor in order to move the T-Bar on the computer screen with ease. To lock the T-Bar to your mouse, right click the T-Bar icon in the Windows taskbar and select **Lock**. To detach the T-Bar from the cursor, left-click anywhere on the screen.

Advanced Features

T-Bar can be controlled using shortcut keys. To view a list of shortcut keys, right click the T-Bar icon in the Windows taskbar and select **Help**.

Program Manufacturer Contact Info

Manufacturer: Fx Software

Website: <http://www.fx-software.co.uk/assistive.htm>

Contact: fxc@btinternet.com

Cost: Free