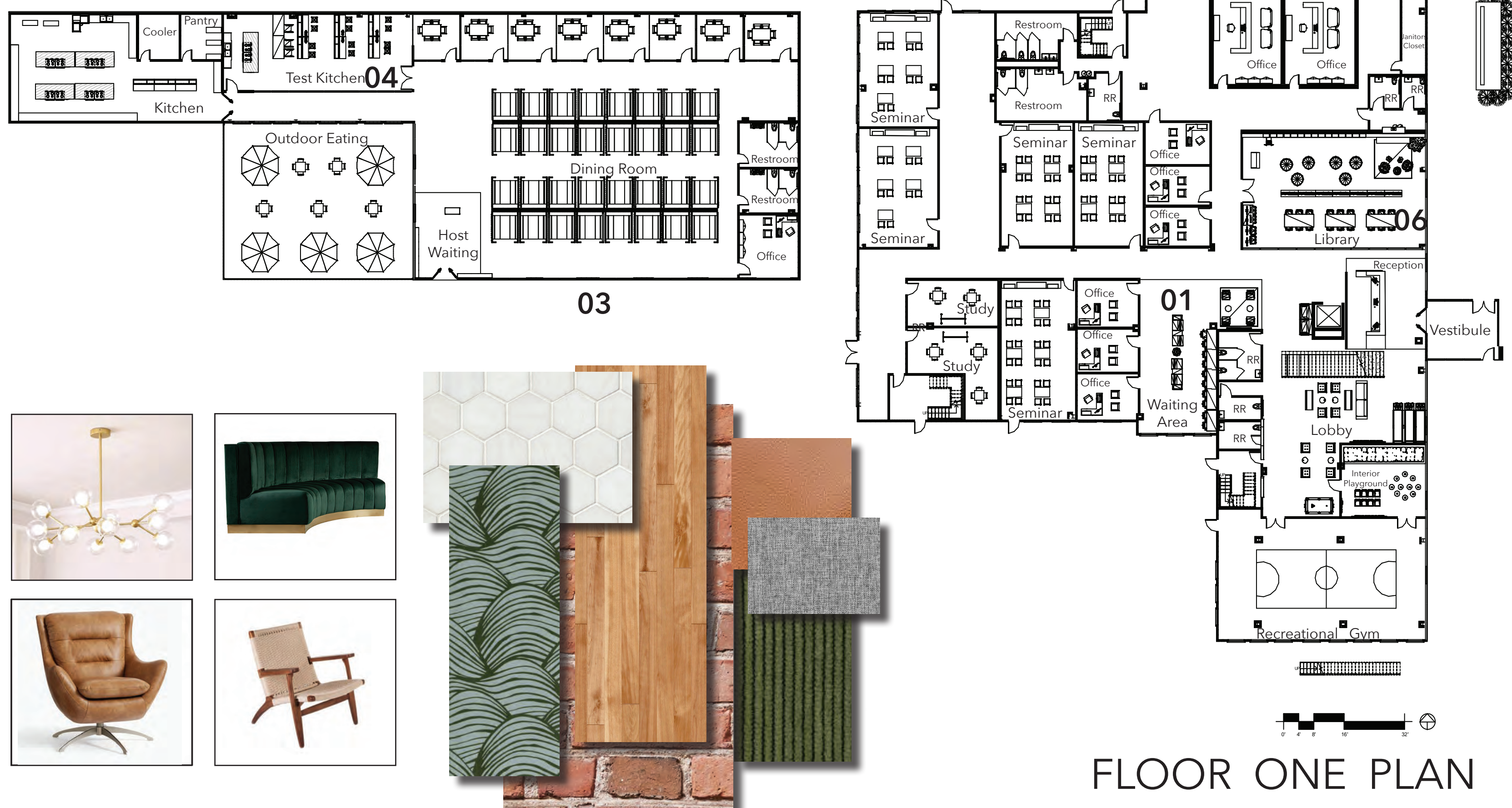


Kelsey Borden

The Missing Piece

LOCATION: Denver, Colorado

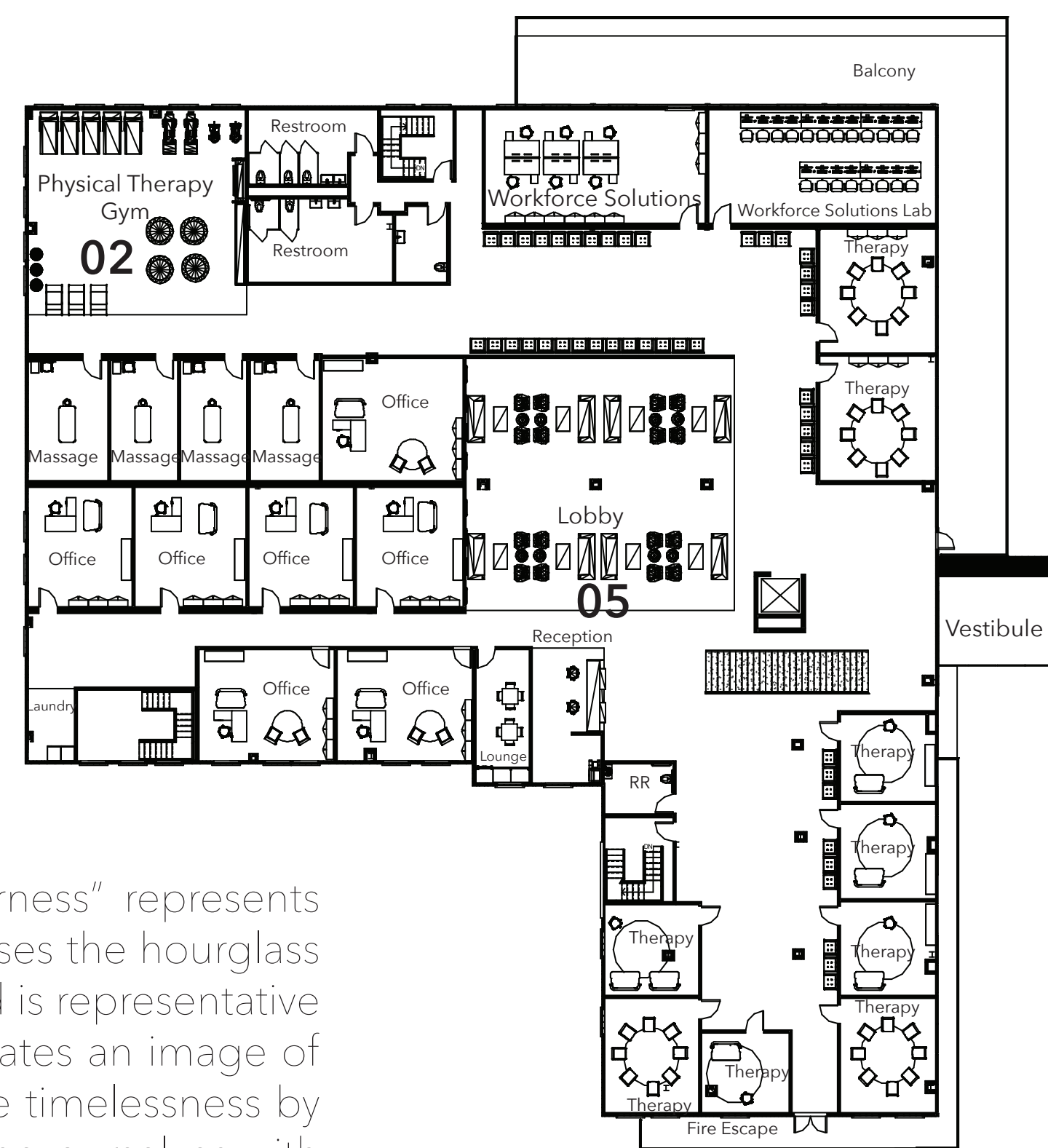
The Missing Piece is a facility that provides resources and activities to individuals diagnosed with autism as well as their families and friends. The community is an answer to the realization that not enough is being done to support such families and individuals dealing with autism. The Missing piece provides therapy services, recreational and sport activities, a library, study areas, classrooms for seminars and workshops, work-force solution offices for job searching, as well as an on-site restaurant with teaching kitchen. The facility will also be equipped with an educated team of professionals dedicated to providing positive experiences for our users. The outcome of these services is a meaningful and supportive space that can be at the center of the autistic community in Denver.



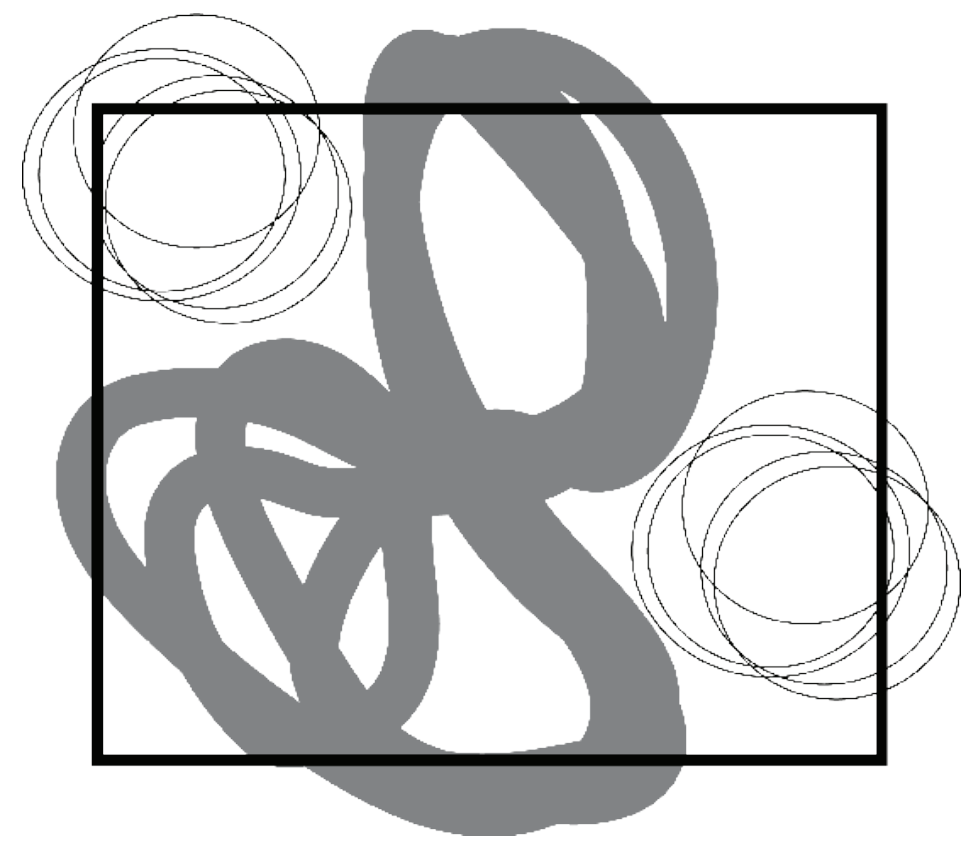
FLOOR ONE PLAN



04. TEACHING KITCHEN



FLOOR TWO PLAN



Timeless Togetherness

The concept "Timeless Togetherness" represents time as a gentle transition, and uses the hourglass for inspiration; each grain of sand is representative of a memory in our lives that creates an image of who we are as people. We create timelessness by becoming the memories, involving ourselves with the life happening around us. The swirling lines are used to represent how messy life also is, and how things that we don't expect happen still do but even then uncertainty can be beautiful. The Missing Piece' yearns to be a part of the sand that makes up those memories and does so through timeless connection.



01. WAITING AREA



02. PHYSICAL THERAPY GYM



03. RESTAURANT FACADE

IMPORTANT FACTS AND STATISTICS

01

"It is the responsibility of an interior designer to consider many things when designing. Thought is given to color, light, line, space, weight, balance, rhythm, egress, codes, specifications, ergonomics, and so much more. However, it is imperative to also account for physiological and psychological effects the environment has on an individual. A designer working with a person with Autism must be aware that, while meeting all the standards applicable to our industry, in the end they are tailoring a safe space for individuals with particular needs and those must be addressed as a result of collaboration with parents, caregivers and medical professionals." (Geilman, 2016)

02

"Be aware of the sounds in the space: Pay attention to appliances, plumbing, lighting, and outside noises as well. Use soft goods to cushion and dampen noise pollution as needed." (Geilman, 2016)

03

"Controlling acoustics, using natural light, but carefully modulating it; arranging spaces to facilitate smooth transitions; providing "escape spaces," which provide private places to retreat; and grouping spaces so that quiet activities are separated from louder and more active ones" (Bennie, 2015)

04

"According to the Centers for Disease Control and Prevention (CDC), nearly 1 out of 45 children between the ages of 3-17 have been diagnosed with Autism" (Geilman, 2016)

05

Studies show that regardless of the gender, Autistic children respond well to pink, tranquil blues, light purples, pale greens and neutral colors. (Geilman, 2016)

06

"In 2018 the Centers for Disease Control and Prevention estimated about one in 59 children have ASD. That's an increase from one in 68 children identified in the previous estimate released two years earlier." (Daniel, 2019)

07

"1 in 65 boys was identified with ASD. 1 in 238 girls was identified with ASD in Colorado" (Daniel, 2019)

THEORETICAL FOUNDATIONS

Attachment theory, defined as "the lasting psychological connectedness between human beings" originated through the work of John Bowlby who was a child psychiatrist for emotionally disturbed children. Through his work he began to realize the importance of attachment between the mother and the child in their cognitive and emotional development so he aimed to study this attachment. I think it is important to recognize that the development of those with ASD is different than that of a typical person and so they tend to have closer attachments to those they reside with. This is an important factor to keep in mind when designing, as the goal of 'The Missing Piece' is to create a safe space where someone with ASD feels comfortable separating from their known support system. Exposure to unknown individuals can help them to hone social skills and develop coping mechanisms outside of their known environment. These skills are necessary and difficult to master for individuals with ASD, but the design of 'The Missing Piece' will aid them in their journey.

LOCATION



The Missing Piece build is located in North Denver, within the Sunny side Neighborhood. The site is 4045 Pecos St, Denver, CO across from the potter highlands historic district and many downtown attractions. It is a 5 minute drive from both major highways I-70, and I-25. It's also walking distance to Ciancio park and multiple bus stops.

The Center for Disease Control has been doing research in Colorado among many other states for the past four years, studying children with Spectrum disorders. Among the states in the study Colorado has 1 in 101 children with Autism Spectrum Disorder (ASD). This rate of ASD diagnosis in Colorado is much higher than many states on the east coast that currently have more resources, which is why a facility in the Midwest is so important.



5. SECOND FLOOR LOBBY



06. LIBRARY

Bennie, Maureen. (2015) Inclusive Design-Creating Spaces to Accommodate Sensory Issues in ASD. Autism Awareness Center. <https://autismawarenesscenter.com/inclusive-design-creating-spaces-to-accommodate-sensory-issues-in-asd/>
 Daniel, Stephanie (2019) "As Autism Rates Rise, A Colorado Mom And CU Boulder Researcher Seek Answers" KUNC Community Radio. <https://www.kunc.org/post/autism-rates-rise-colorado-mom-and-cu-boulder-researcher-look-for-answers/streams/0>
 Geilman, Anna (2016) "Designing for Children with Sensory Integration Disorders: A Handbook for Residential Designers." JCCC Honors Journal. Vol. 8. Iss. 1. Article 3.