

THE **HEART**
HOUSE & COMMUNITY
CENTER



LOCATION: Salem, Oregon

The Heart House & Community Center is a local Child Protective Services (CPS) facility, located in Salem, Oregon. The project consists of two buildings: The Child Safe Center & The Community Center. Through the integration of collaboration and safety, the facility intends to bring awareness to the rising foster housing shortage and provide services of CPS care. The purpose of this project is to create a catalyst where foster children, workforce, families, and community members can thrive, learn, and interact. Supported by research addressing various CPS topics (mental health, workforce culture, safety/security, child placement satisfaction), nature-based materiality, and community influence, the space is designed to celebrate a multitude of experiences and personalities.



MATERIALITY

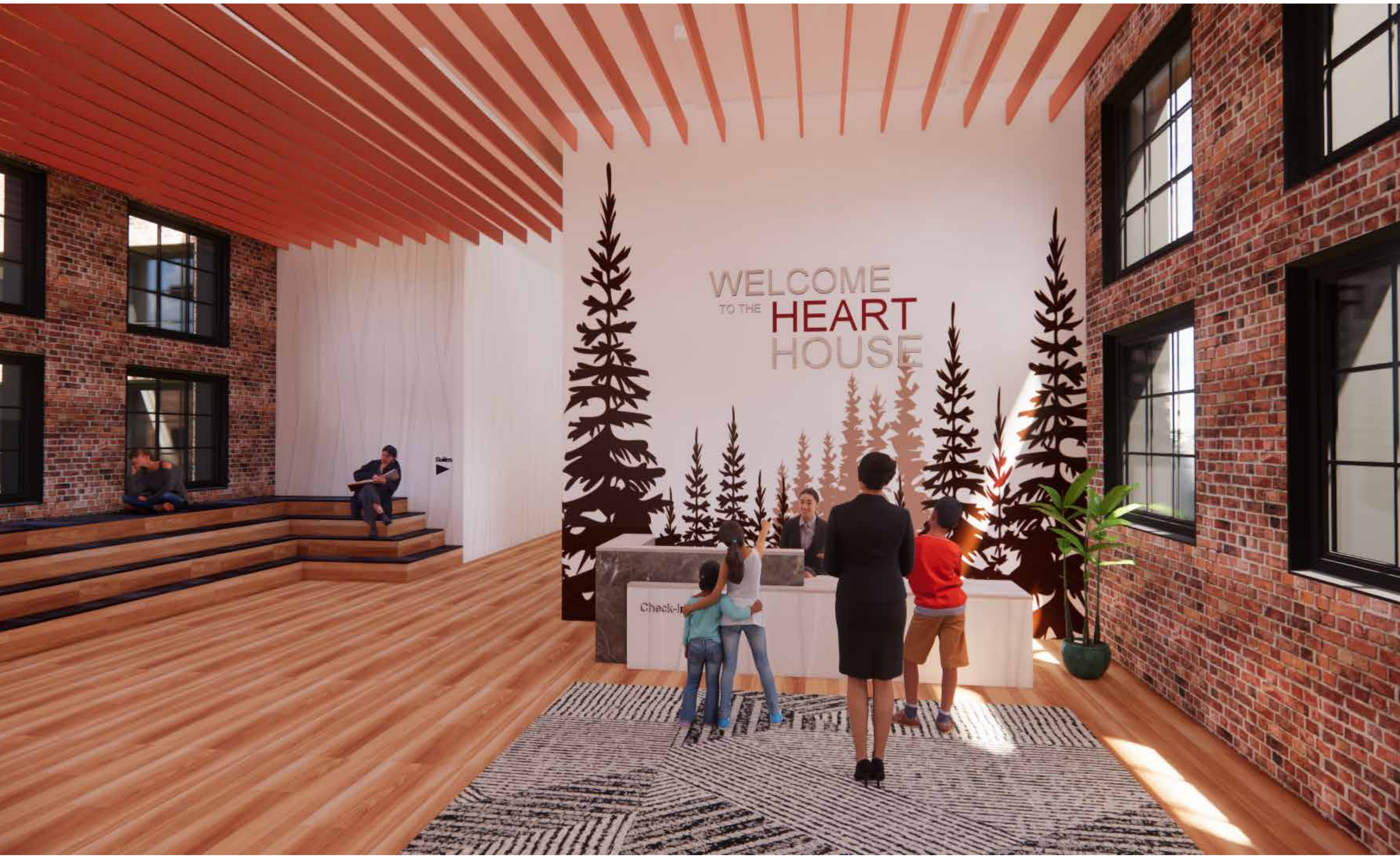


CONCEPT

“A Compassionate Momentum”

The Heart House & Community Center strives for equity among all users. The Concept, “A Compassionate Momentum”, represents the balance between respecting other’s vulnerabilities and experiences, while also being driven in mission.

This concept was developed from the mutualistic relationship between a butterfly and flower. When a butterfly travels from flower to flower, you aren’t always sure of their destination. They may fly in circles before deciding where to land; yet, the momentum of their movement has a certain grace and youthfulness to it.



Residential Lobby



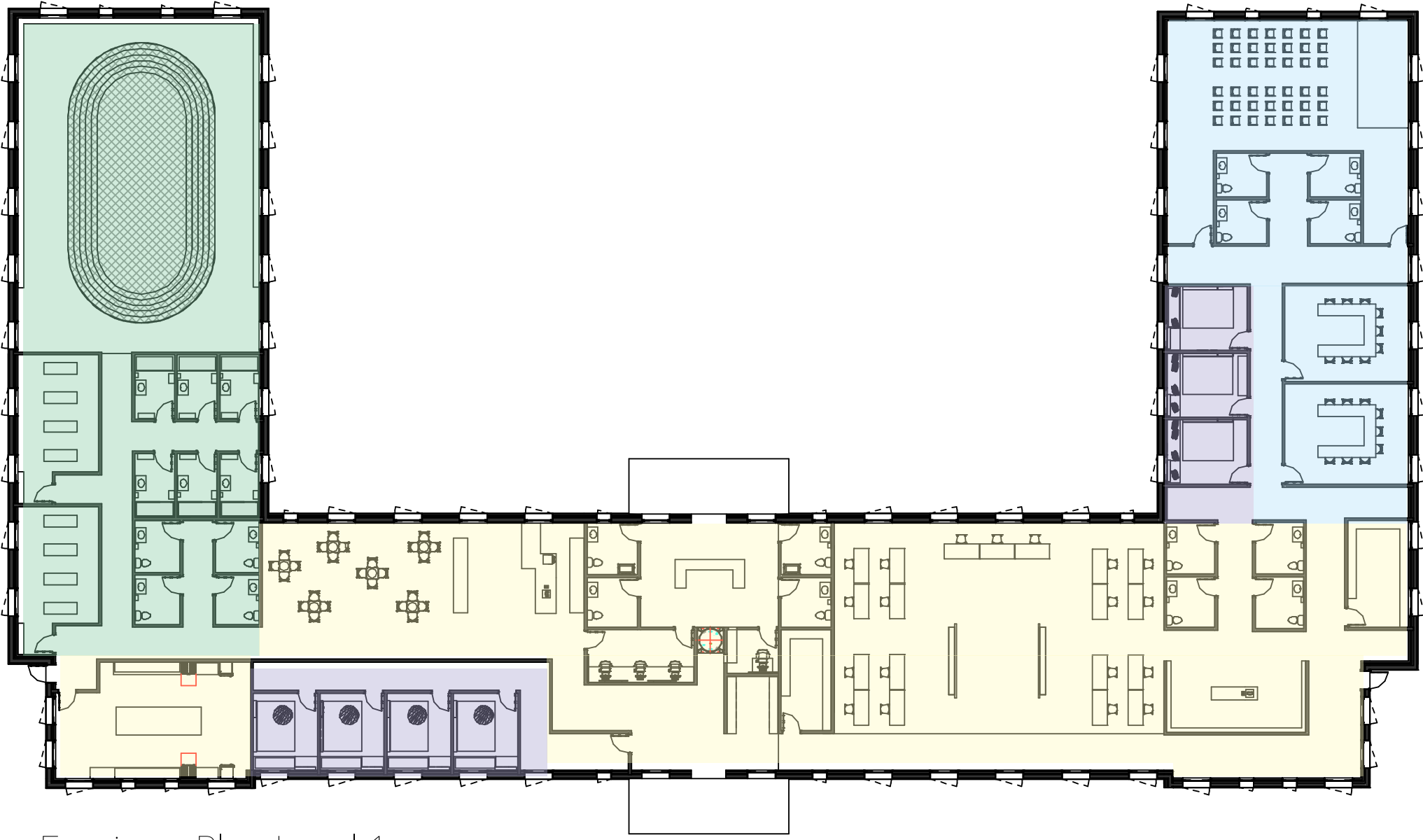
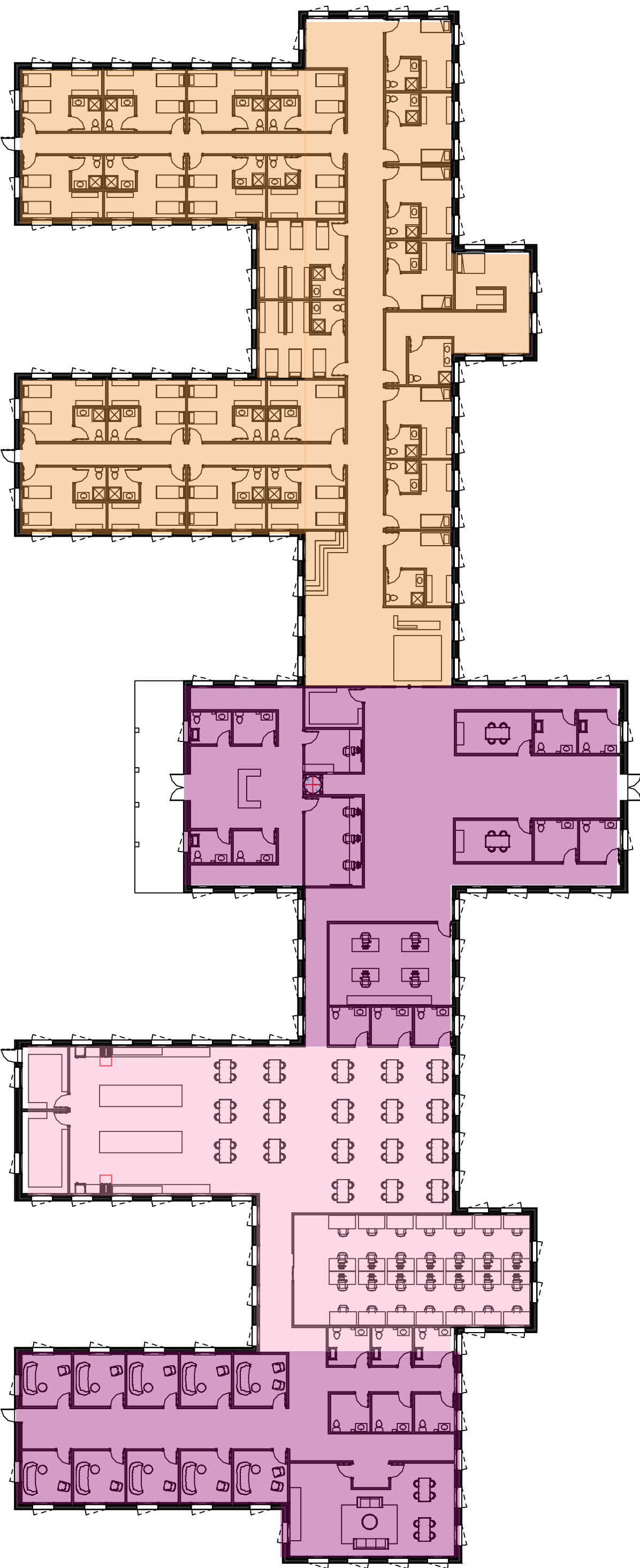
Community Art Hub



Restoration Room

ISSUES

1. Safety and privacy in a mixed-use environment, and how community influence plays a role.
2. Collaboration among community members, workforce, families, and children in a fragile atmosphere.
3. Emotional well-being in the workplace, including support systems for children, families, and workforce.



Furniture Plan Level 1
1/16"=1'0"

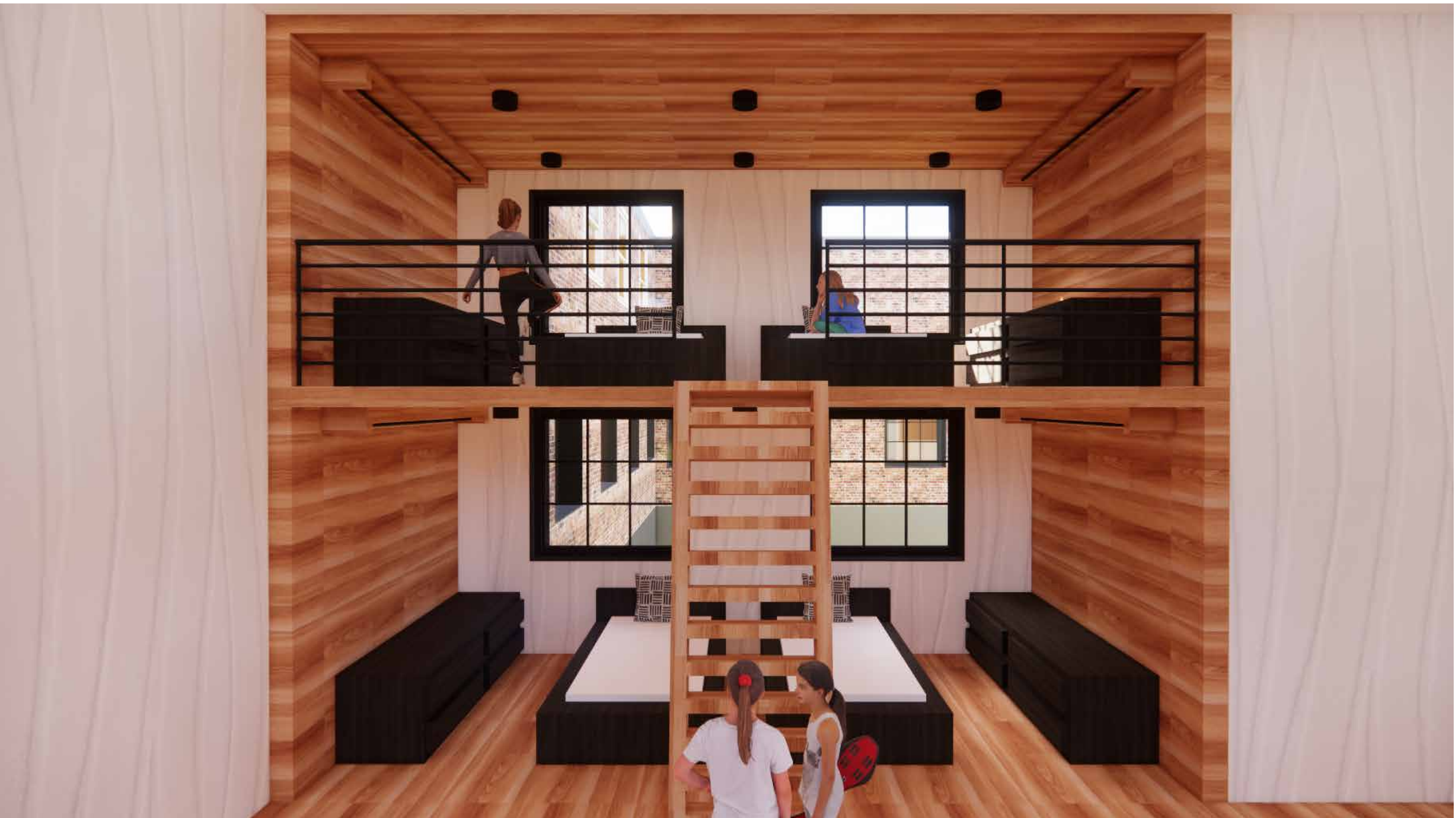
FLOOR PLAN KEY

Community Center

- Fitness Area
- Private/Quiet
- Public/Social
- Community Outreach

Residential Living

- Suites
- CPS Personnel
- Living Spaces



10-12 Year Old Female Suite