

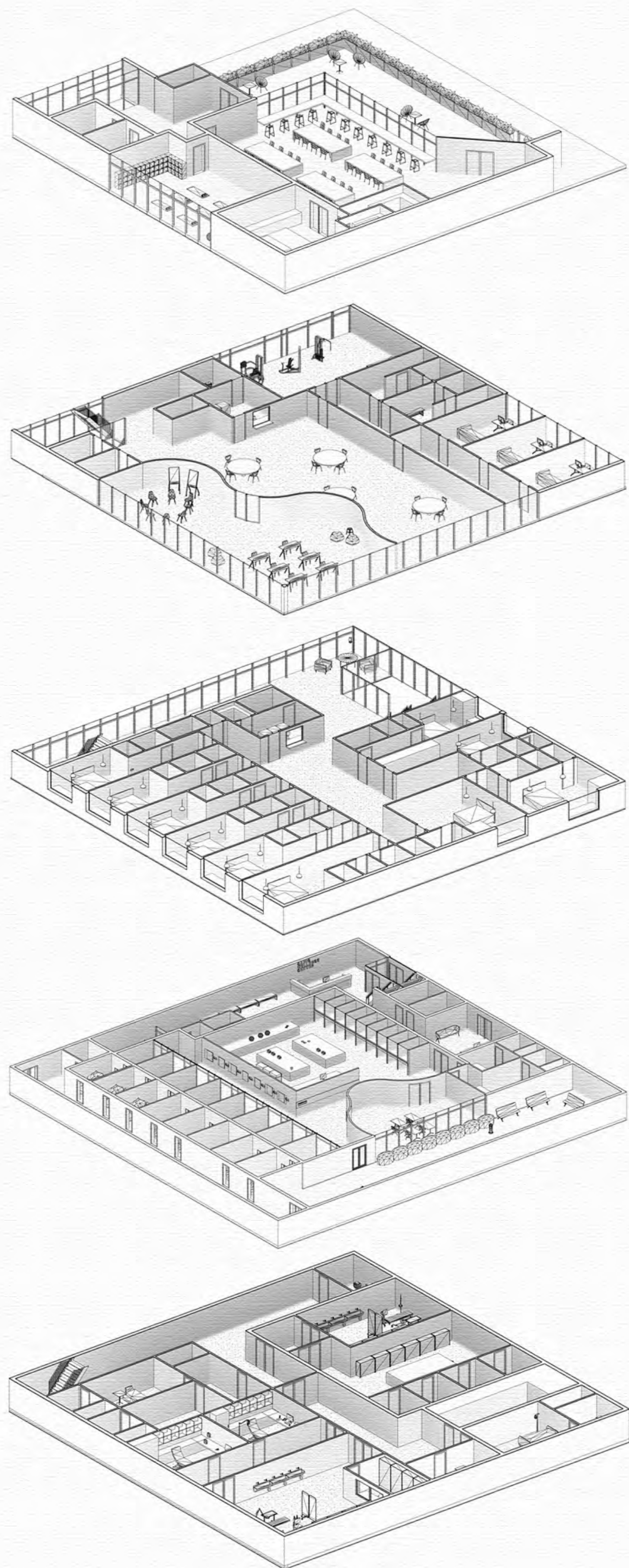
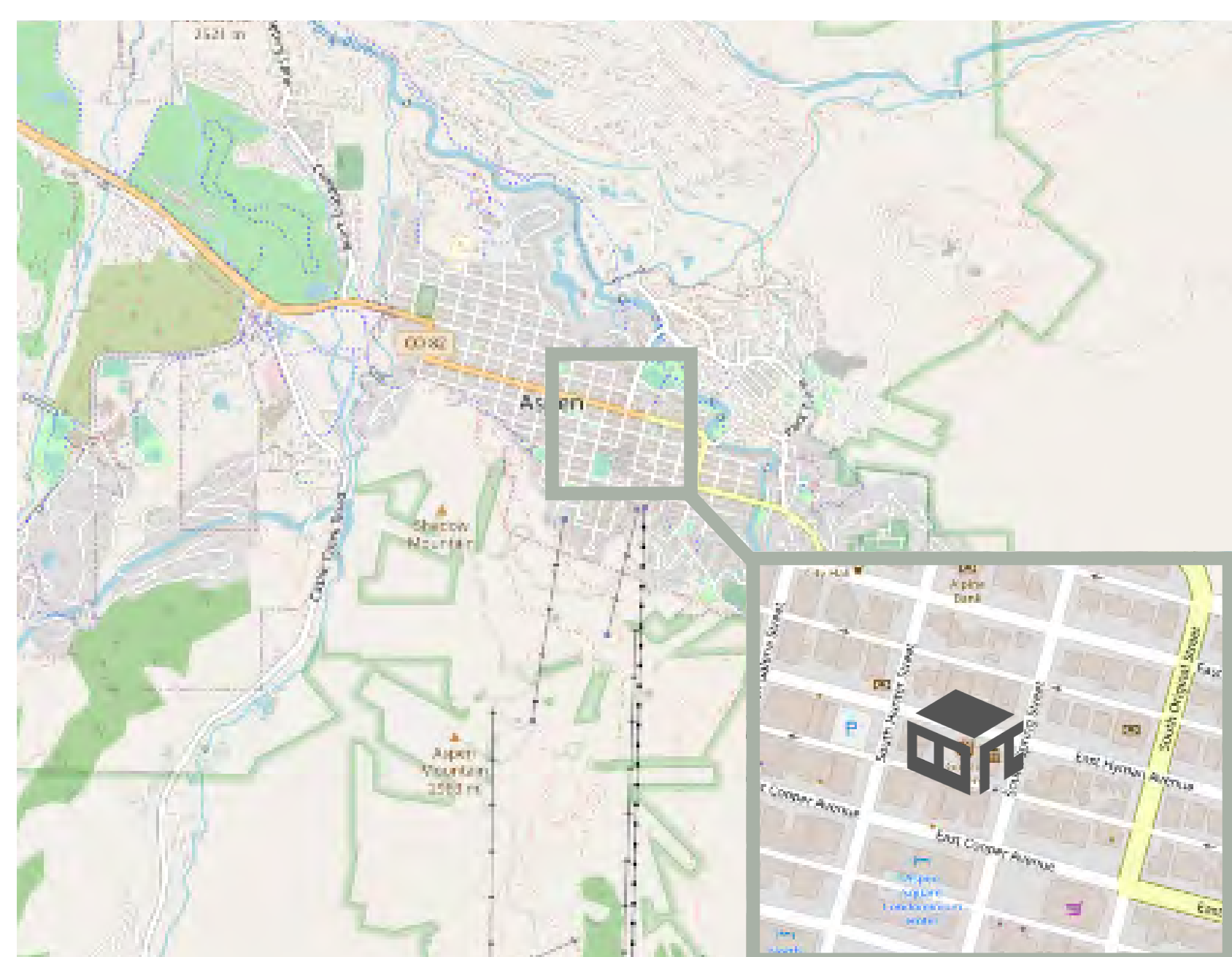
EMMA FOWLER



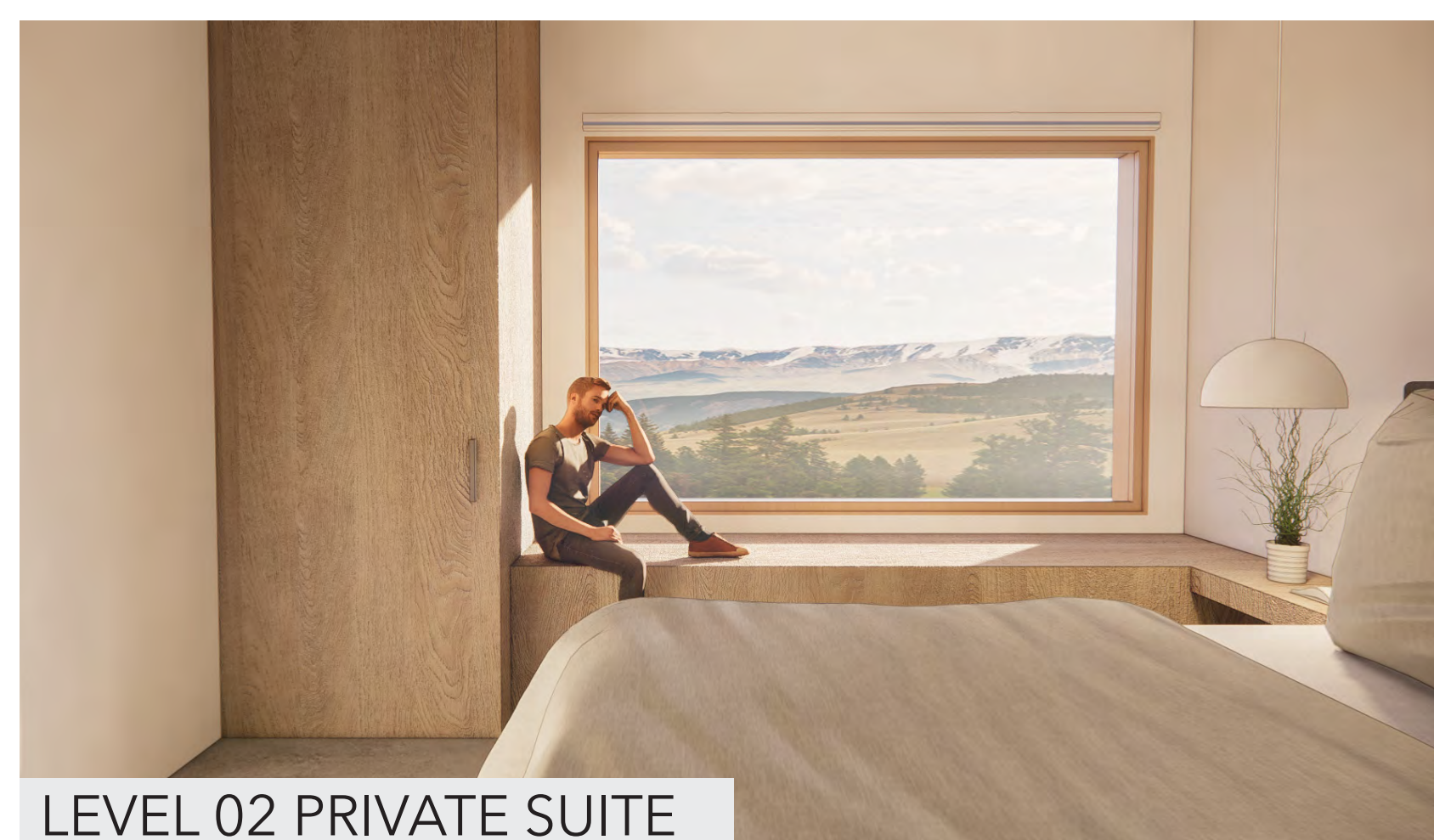
CANIS WELLNESS CENTER
EST. 2020

LOCATION: Aspen, Colorado

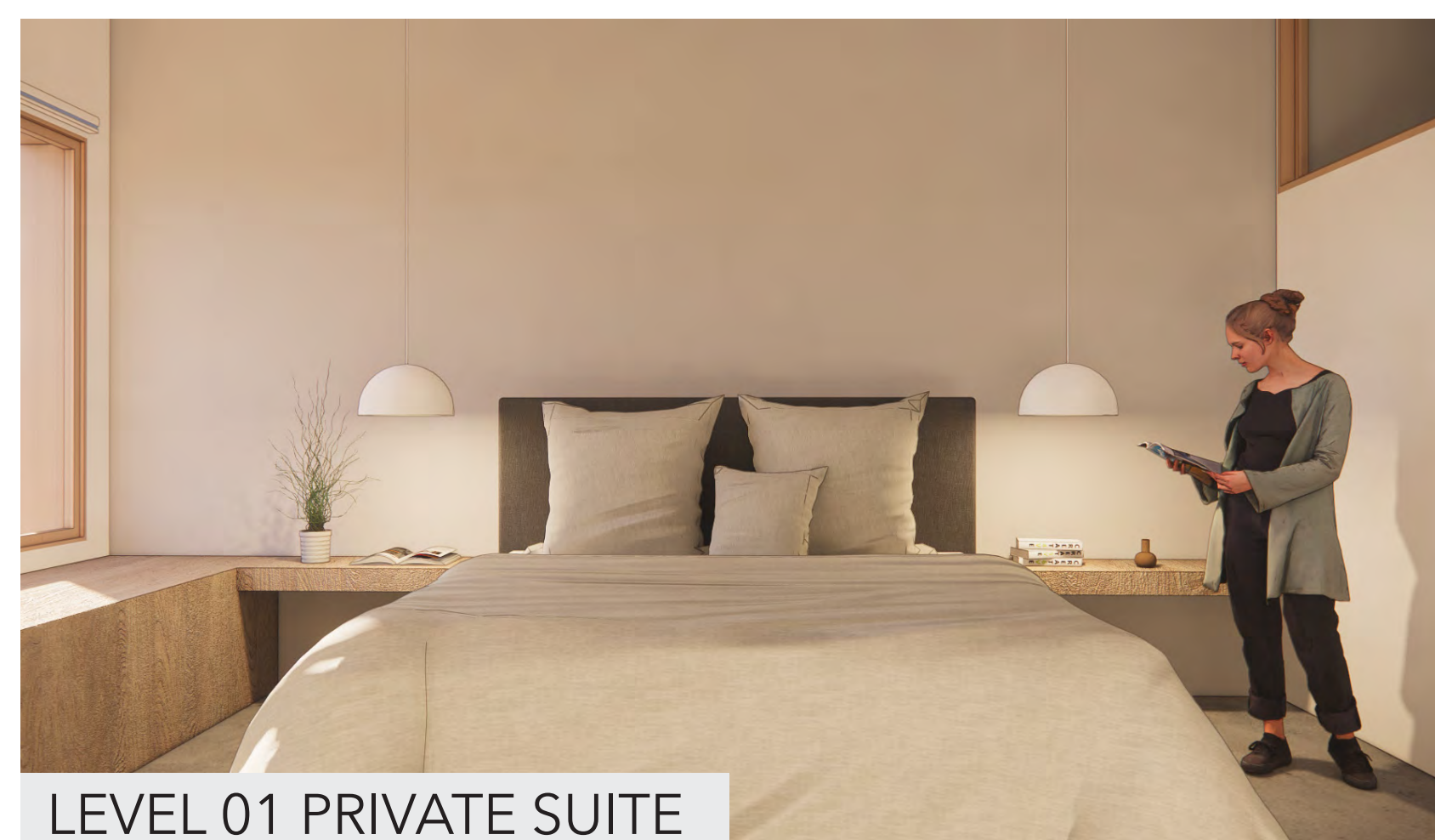
Named after the constellation Canis Major, the Canis Wellness Center is a unique, hybrid institution that combines a wellness center with an animal shelter. The typical patients staying at the wellness center are those suffering from mental illness or substance abuse. Research has found that animals can provide humans with emotional support, accelerate the healing process, and even lower blood-pressure. Through the animal integration program, patients have the option to engage with, train, or even adopt an animal from the shelter once their stay is complete. The purpose of the Canis Wellness Center is to nourish the powerful human-animal relationship in order to better support and improve restorative practices.



LEVEL 01 LOBBY



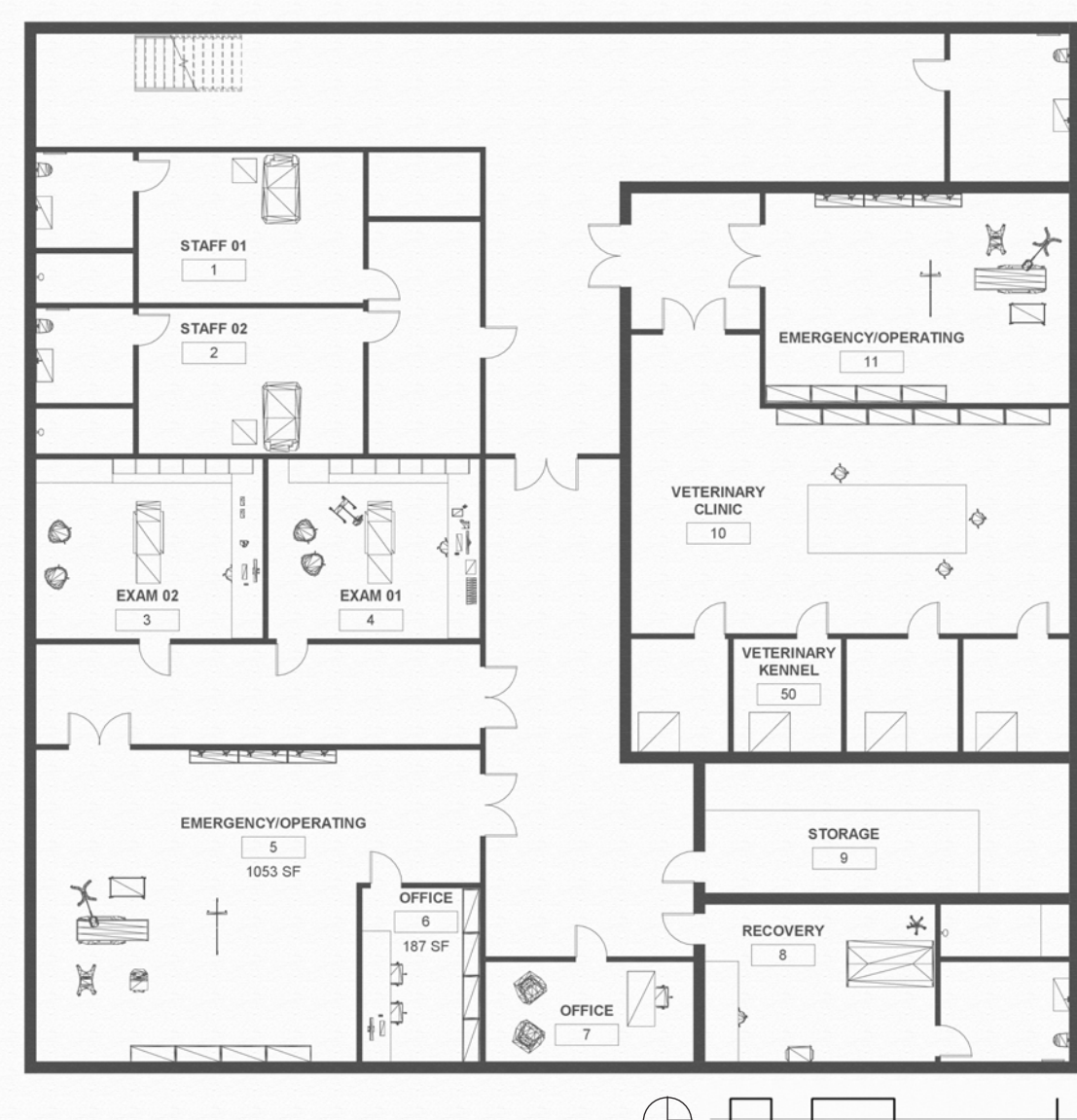
LEVEL 02 PRIVATE SUITE



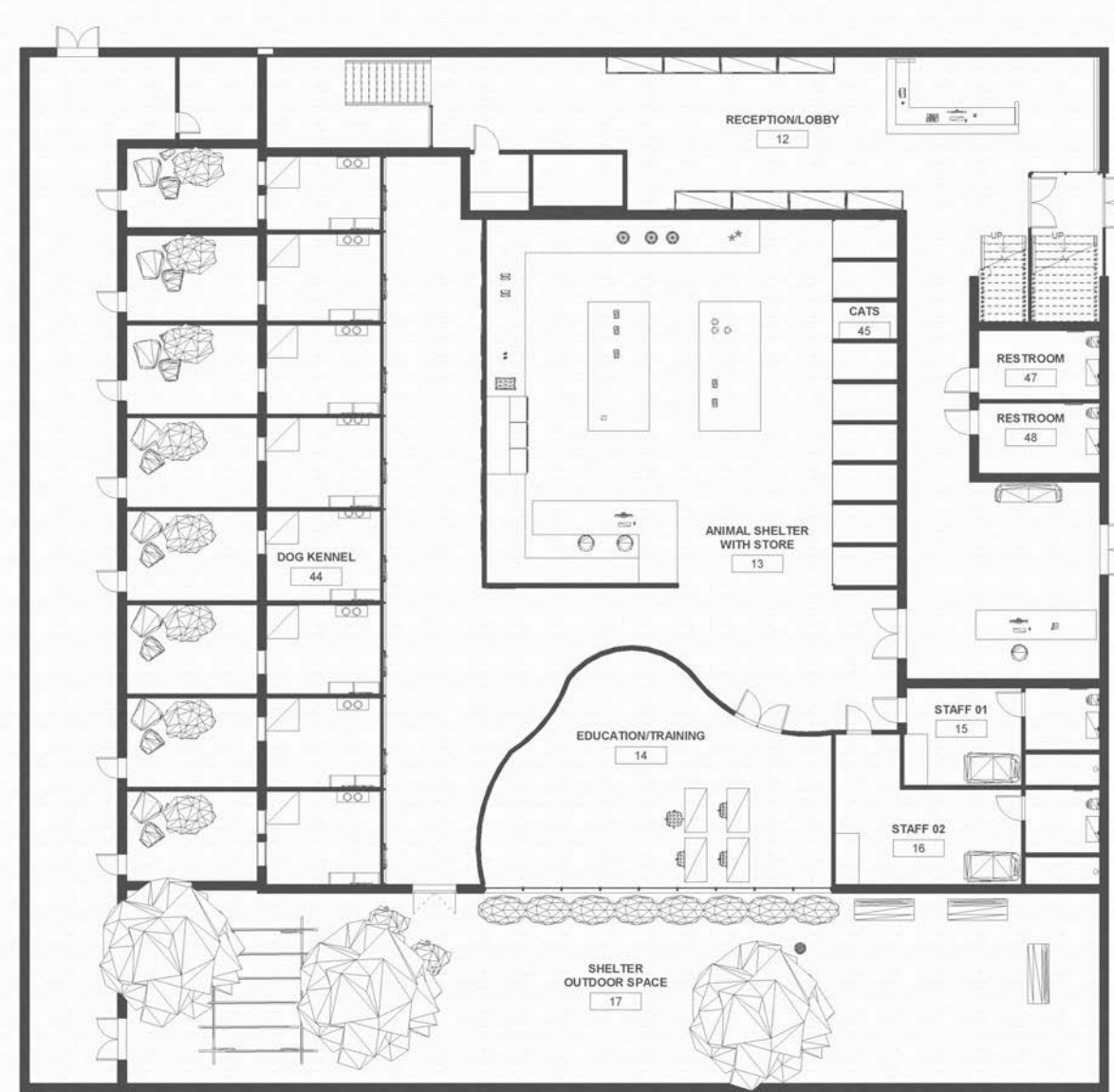
LEVEL 01 PRIVATE SUITE



LEVEL 01 RECEPTION



LEVEL 00 BASEMENT FLOOR



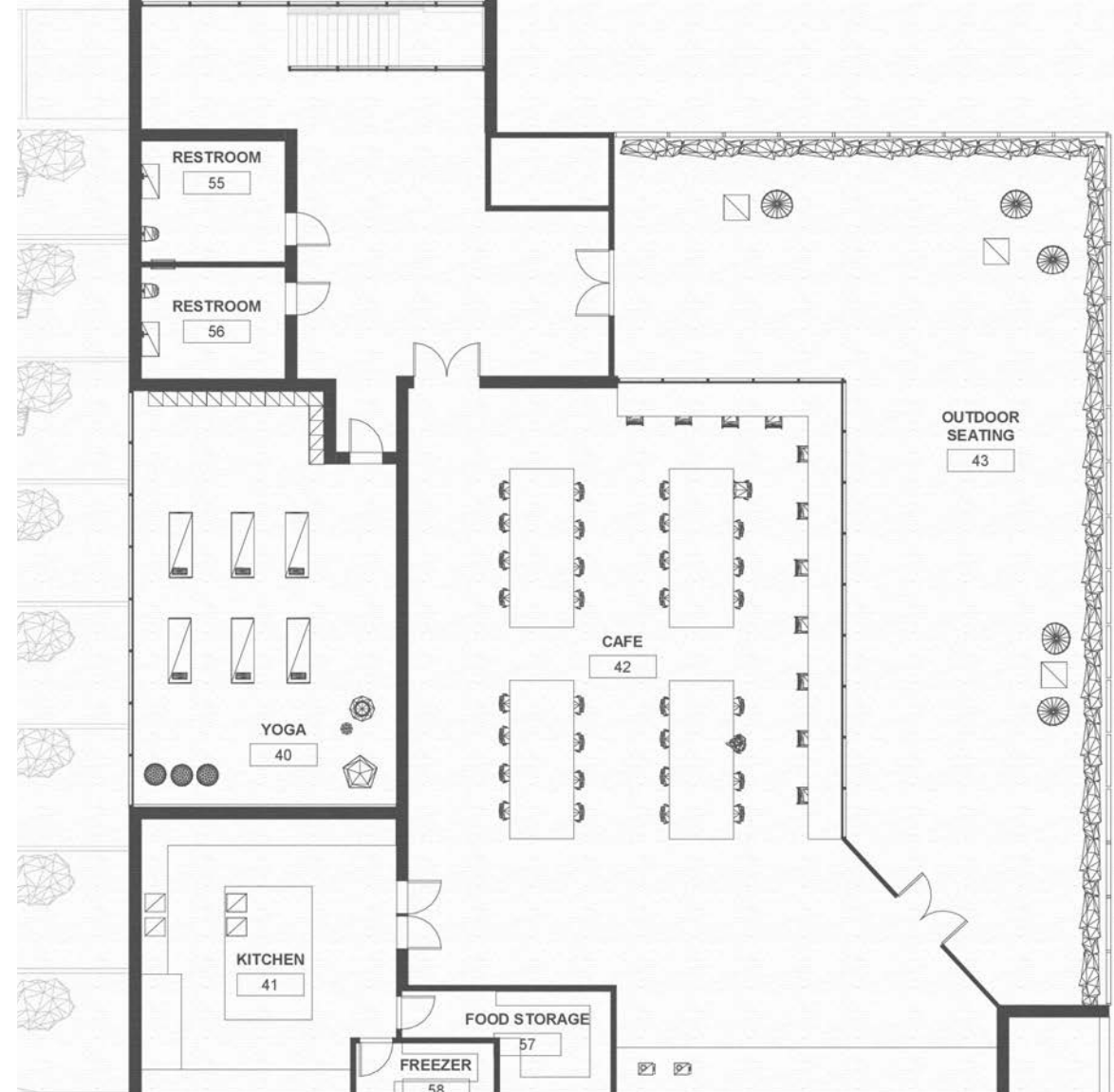
LEVEL 01 GROUND FLOOR



LEVEL 02 WELLNESS SUITES



LEVEL 03 WELLNESS CENTER



LEVEL 04 COMMUNITY SPACE



LEVEL 01 DOG KENNELS



LEVEL 01 ANIMAL SHELTER



LEVEL 00 EXAM ROOM



LEVEL 03 ACTIVITIES SPACE



LEVEL 03 PSYCHIARY OFFICE