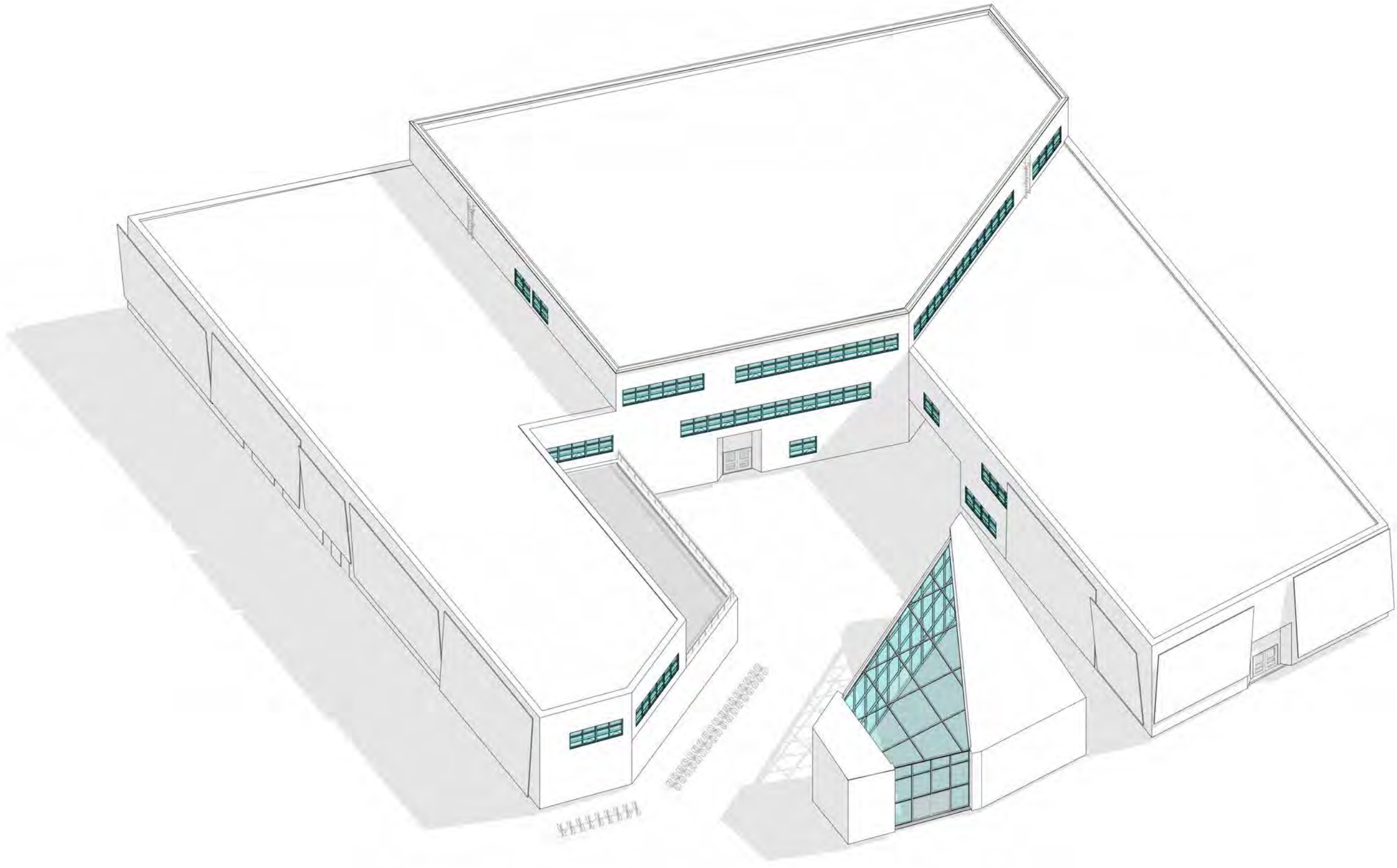


MEGHAN JACKSON

# Smithsonian Museum of the People

LOCATION: Washington, D.C.

The Smithsonian Museum of the People (SMP) is an art museum designed for inclusivity and community engagement. It seeks to make art approachable by prioritizing universal accessibility and elevating underrepresented voices. To do this, interactivity was prioritized in spaces such as workshop studios and social areas for visitors to commingle. By framing art as interactive, dynamic, and enjoyable, the SMP aims to increase the annual number of museum visitors to Washington, D.C.. Art has the power to spark societal change, especially when it speaks to a larger audience. Thus, the SMP's mission is to create community and empower people to make a difference.

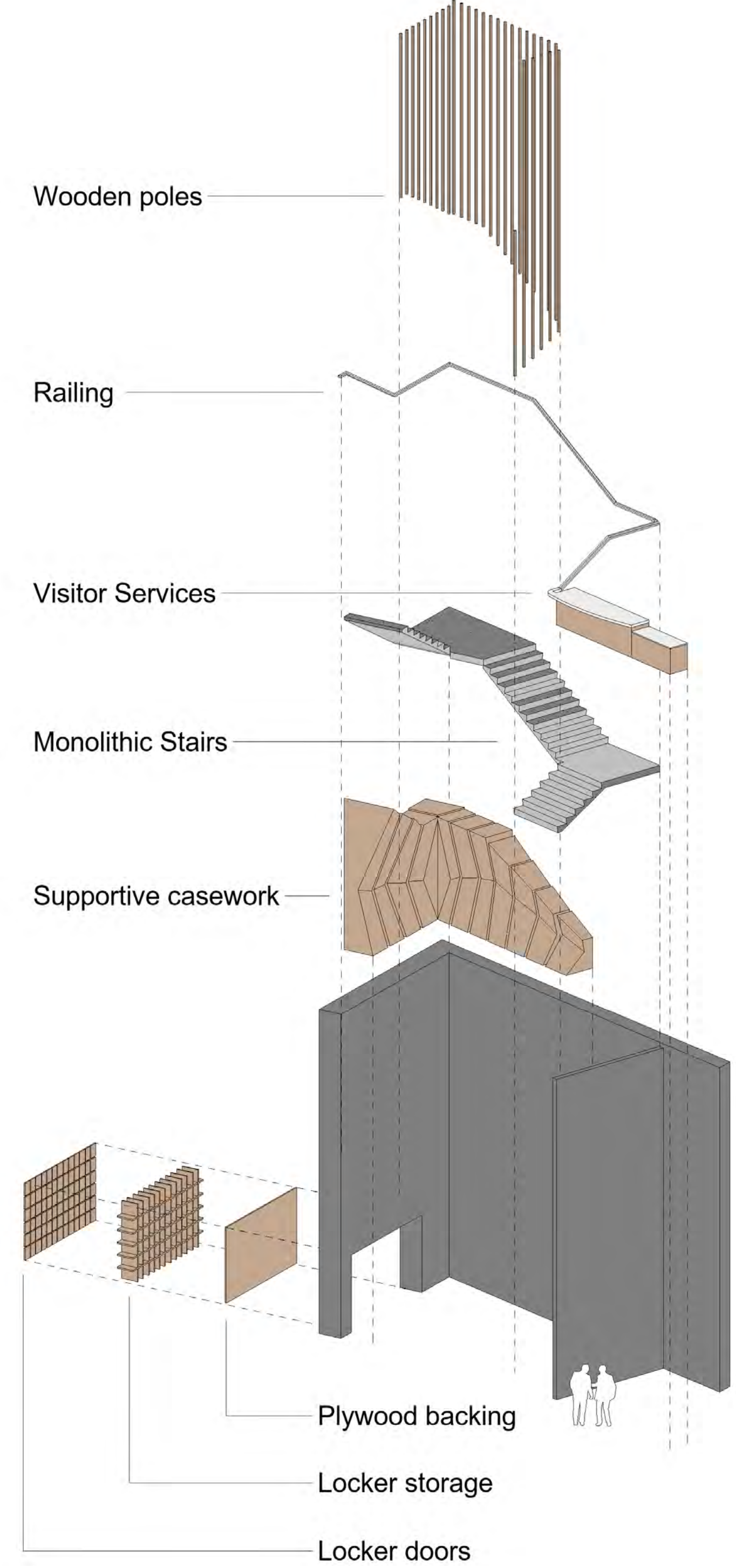
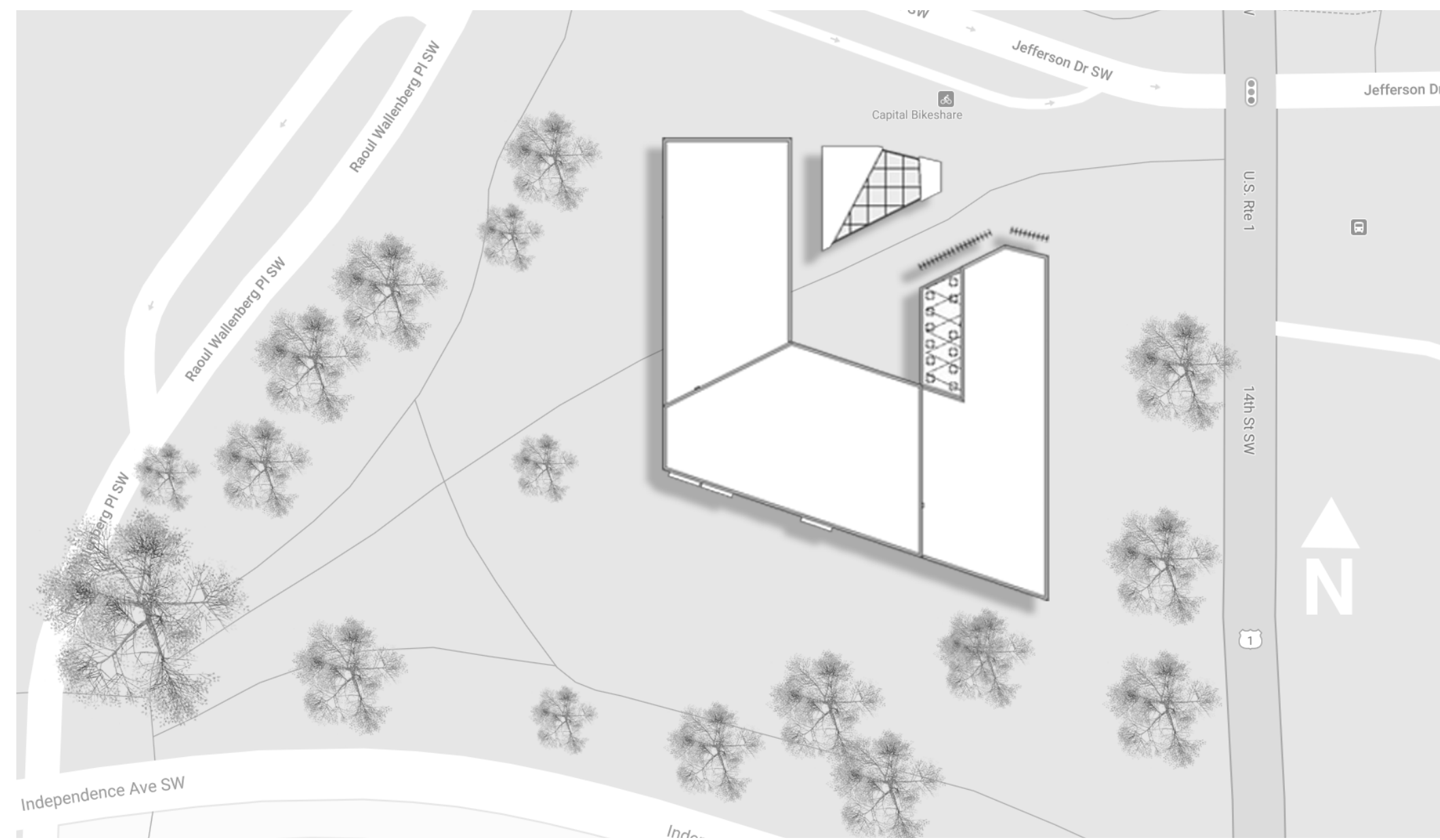


## Site

The site is located in a park with many trees and pedestrian walkways. The shape of the building was designed to preserve these trees and incorporate the largest pedestrian walkway. Together, this supports the environment and the community.

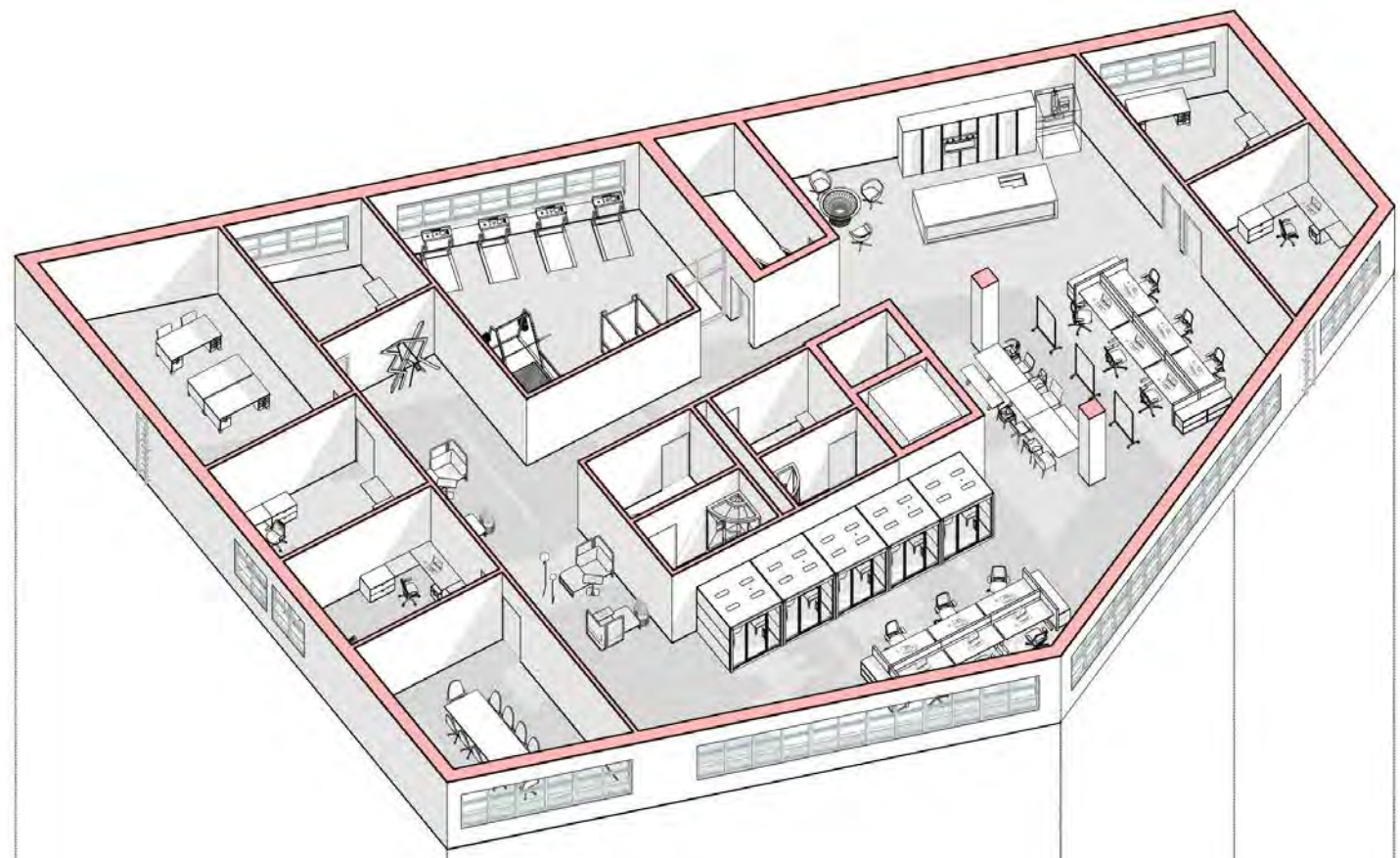
## Commemorative Motion

This concept is inspired by the cherry trees native to D.C. They bloom for a short period of time and invite us to stay present and thoughtful. When viewing art through this mindset, history is reframed to be inclusive by embracing the current moment of change: commemorative motion.



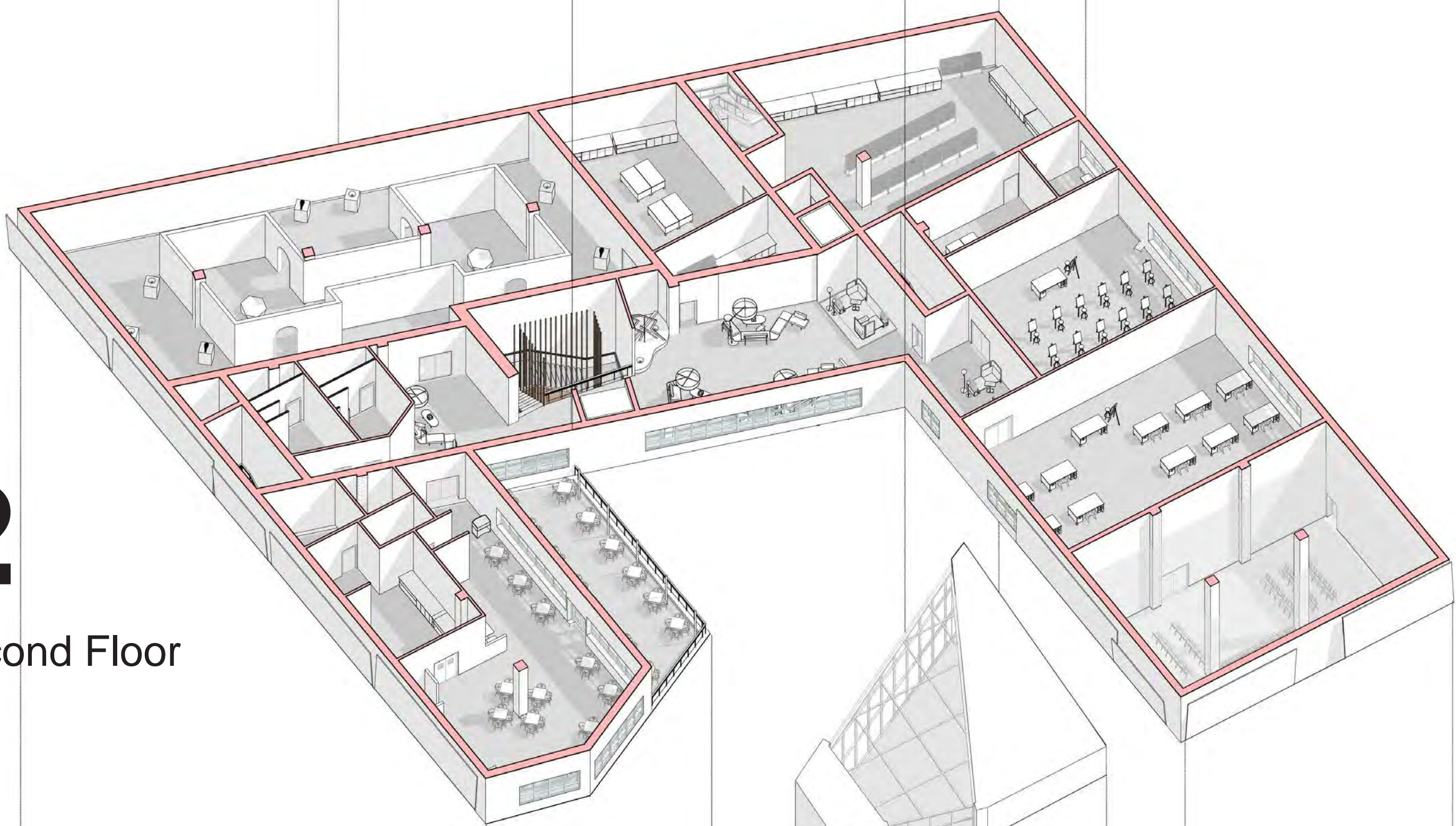
## 3

Third Floor



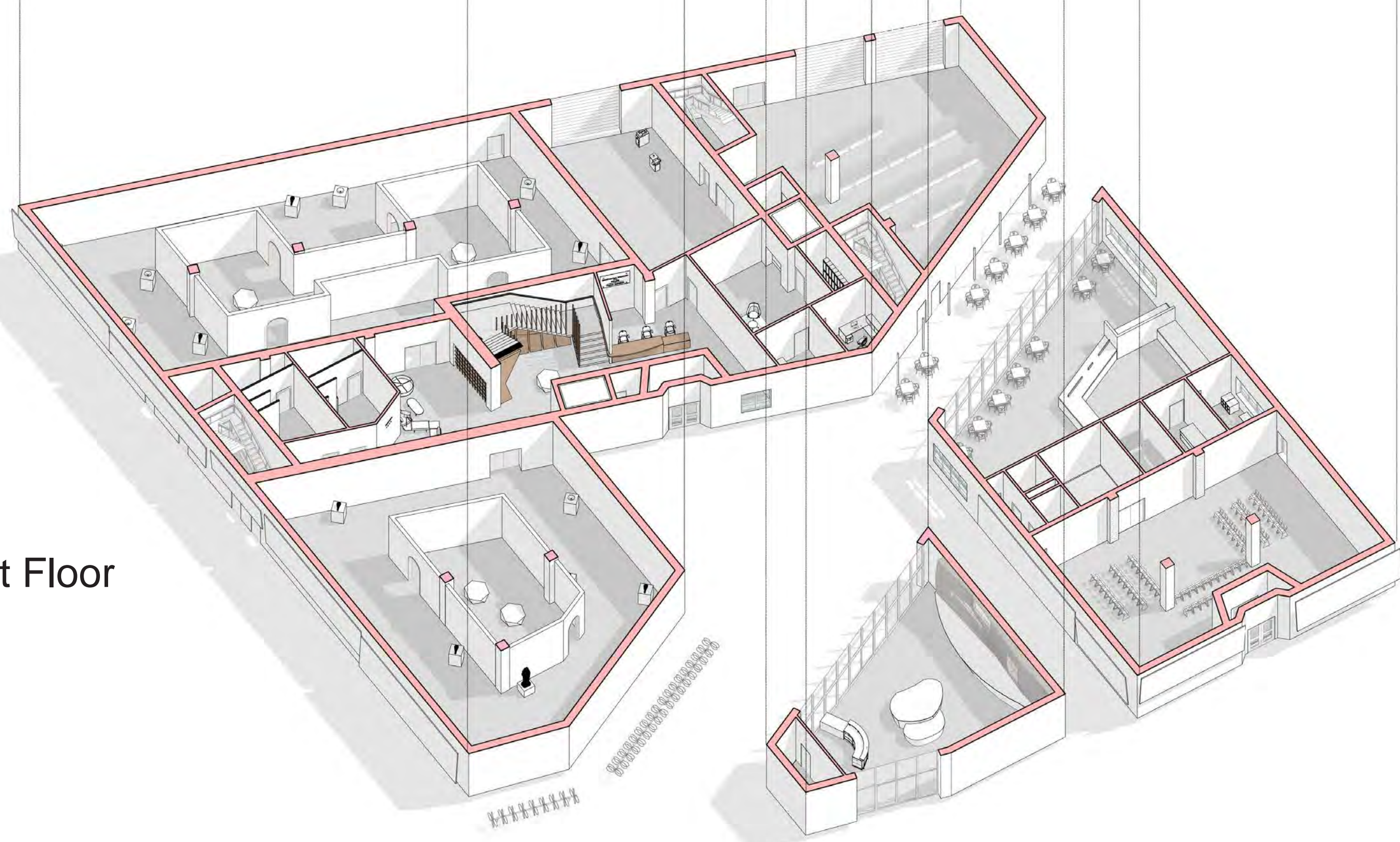
## 2

Second Floor



## 1

First Floor



## Main Entrance

Features a grand staircase that includes locker storage. This welcomes hands-on and personal interaction with art.



## Gift Shop

Freestanding building with large windows and dynamic display of merchandise.



## Gallery #1

Reconfigurable displays and unconventional room layout create a new and inclusive art viewing experience.

