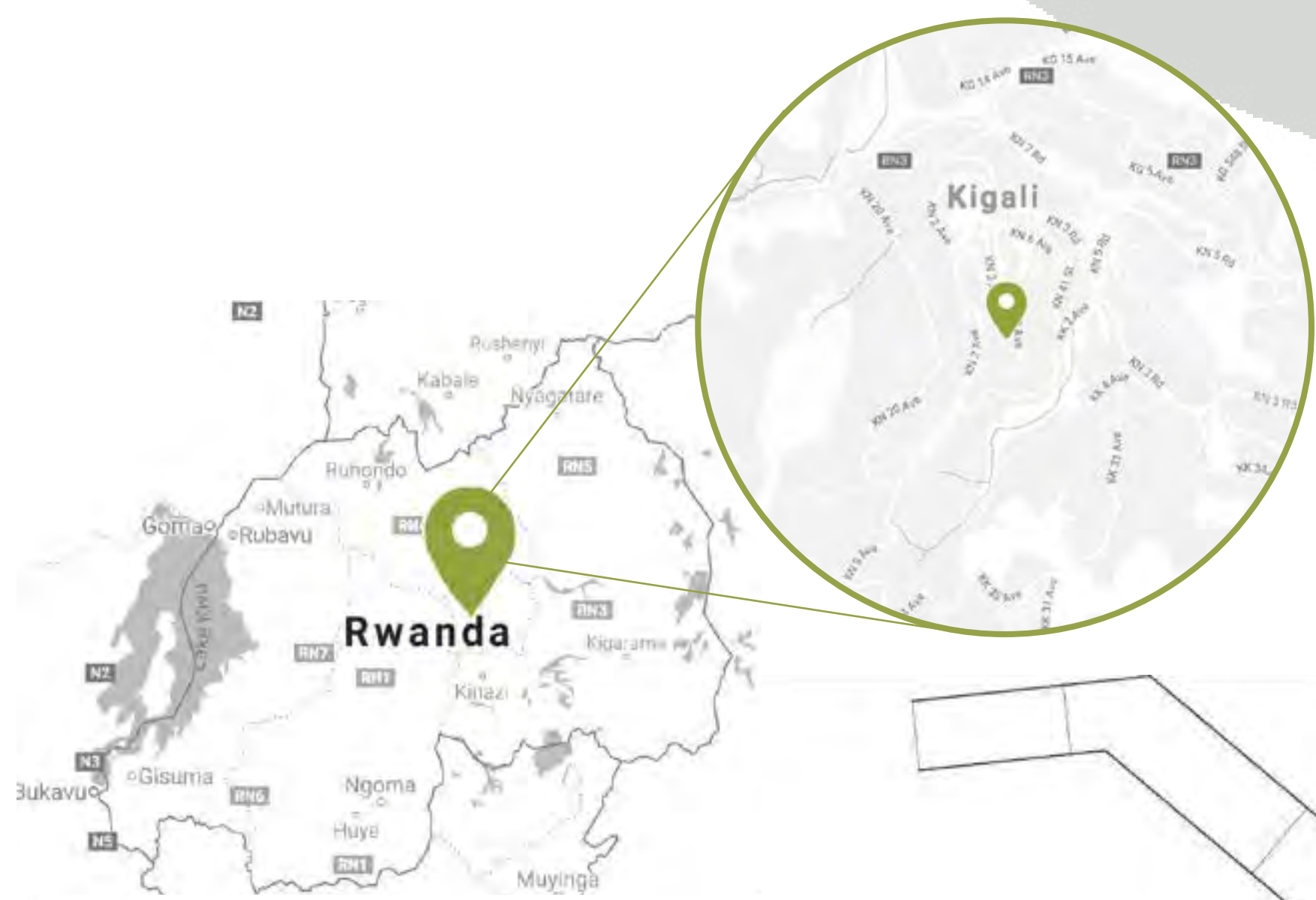


MARCIA JONES

Kigali Green Campus

LOCATION: Kigali, Rwanda

The Kigali Green Campus is dedicated to providing quality residential, educational, and health resources to orphaned children in Rwanda. The site is split into separate modules for activities including learning, living, and playing. The educational space creates engaging learning environments and features usable planting space, reading nooks, and an interactive library. While preserving accessibility, the site uses a main walkway to separate life at school and at home. The residential spaces foster healthy independence and simultaneously provide guidance for each student. The site as a whole is dedicated to giving students the proper resources and support that is necessary to create strong roots from which they will flourish.



MATERIALITY



COMMUNITY SPACE



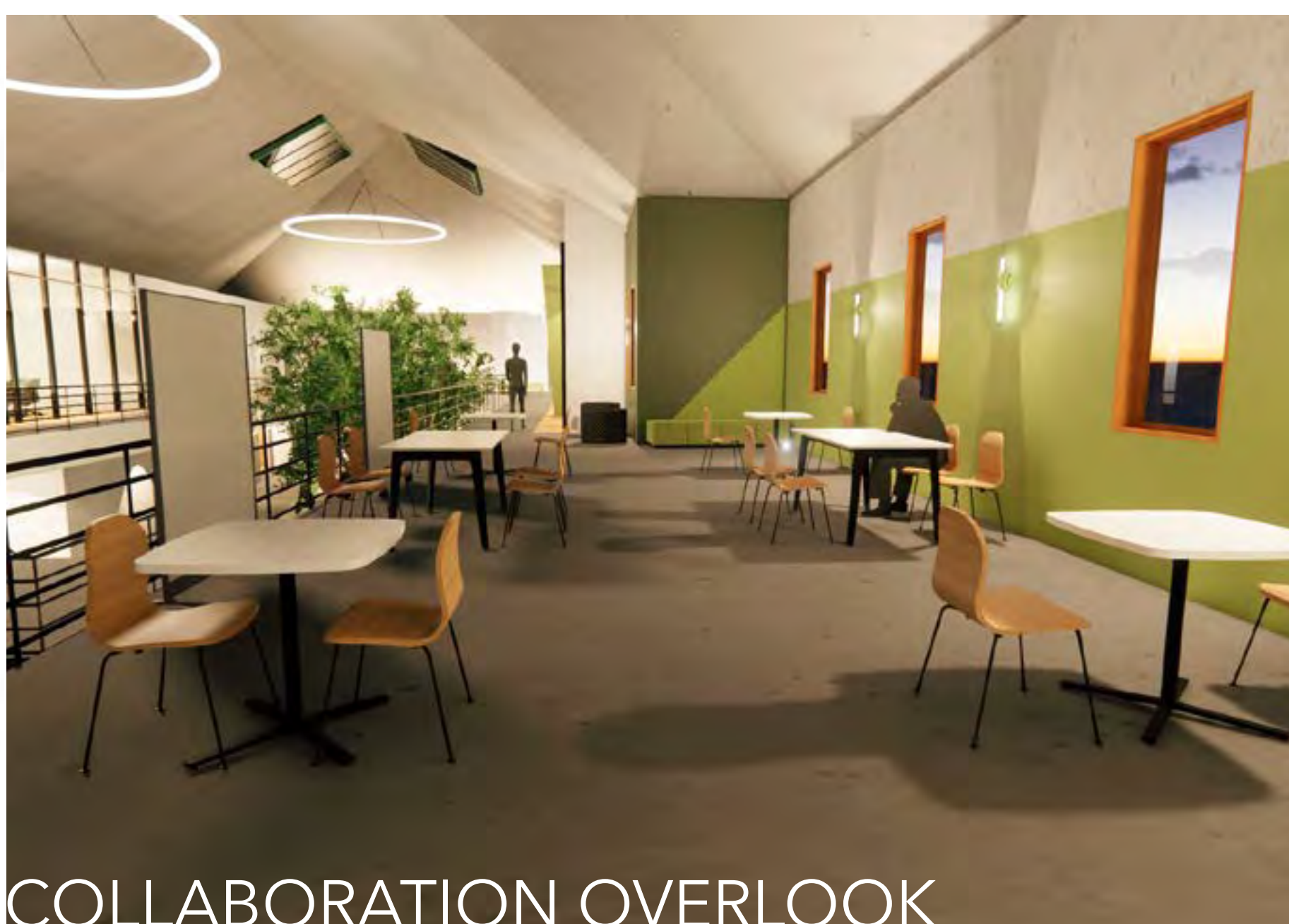
DINING HALL

- LEVEL 2**
- 1. COLLABORATION**
- Conference Room, Open Work Spaces
 - 2. EDUCATION**
- Flexible Classrooms, Computer Lab, Staff Offices
 - 3. STUDENT LIVING**
- Dorm Style, Community Spaces, Laundry Rooms
 - 4. STAFF LIVING**
- Separate Unit, Apartment Style, Multiple Bedrooms, Shared Kitchen/Living Spaces

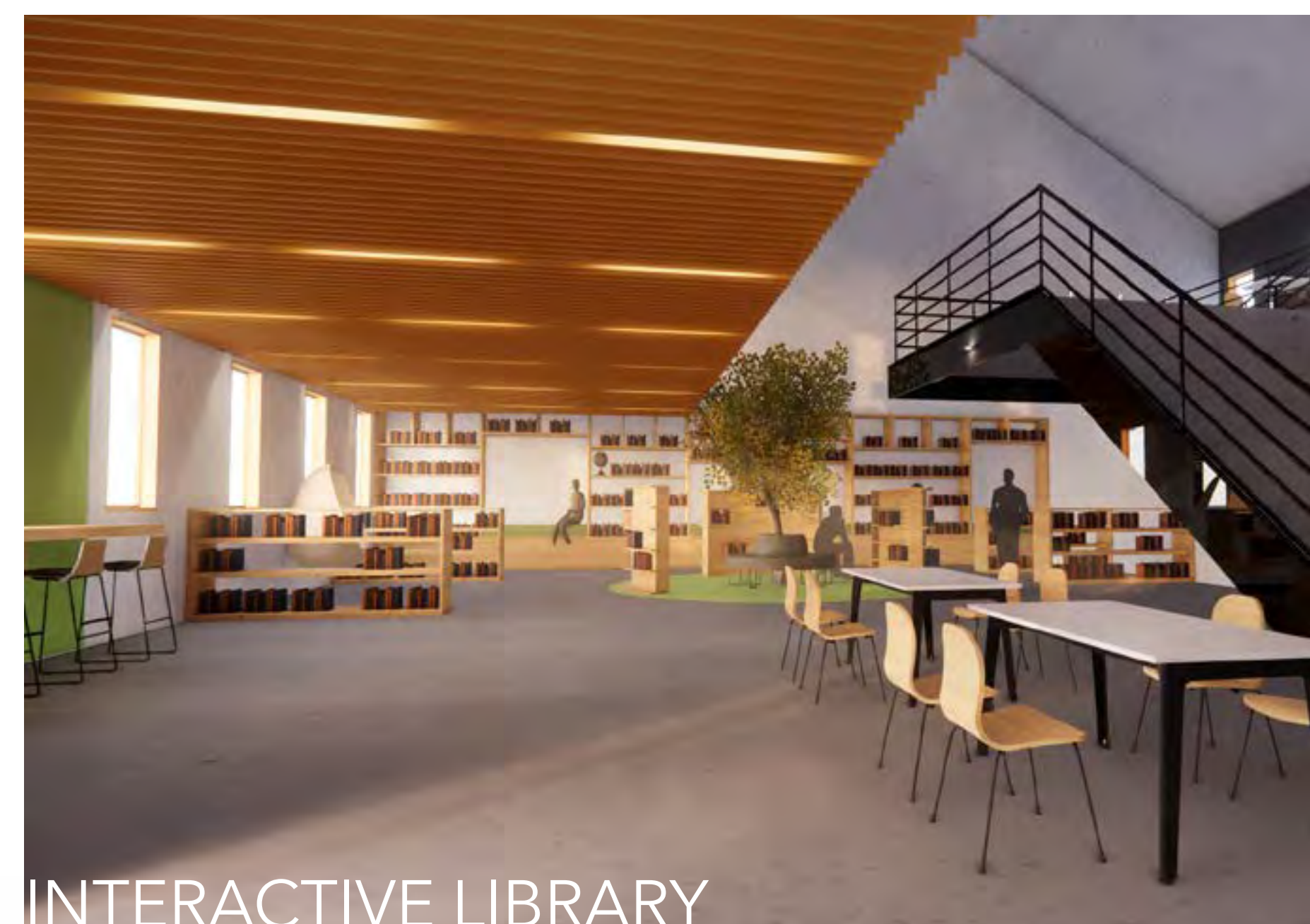


EDUCATIONAL ATRIUM

- LEVEL 1**
- 1. GYMNASIUM**
 - 2. DINING HALL**
 - 3. LIBRARY**
- Reception, Director's Office, Book Return, Reading Nooks, Open Work Spaces
 - 4. EDUCATION**
- Green Space Atrium, Flexible Classrooms, Computer Lab
 - 5. STUDENT LIVING**
- Dorms, Community Space, Laundry, Staff Studio Apartment
 - 6. HEALTH**
- Exam Rooms, Prescription Office, Dental and Optical Resources



COLLABORATION OVERLOOK



INTERACTIVE LIBRARY

