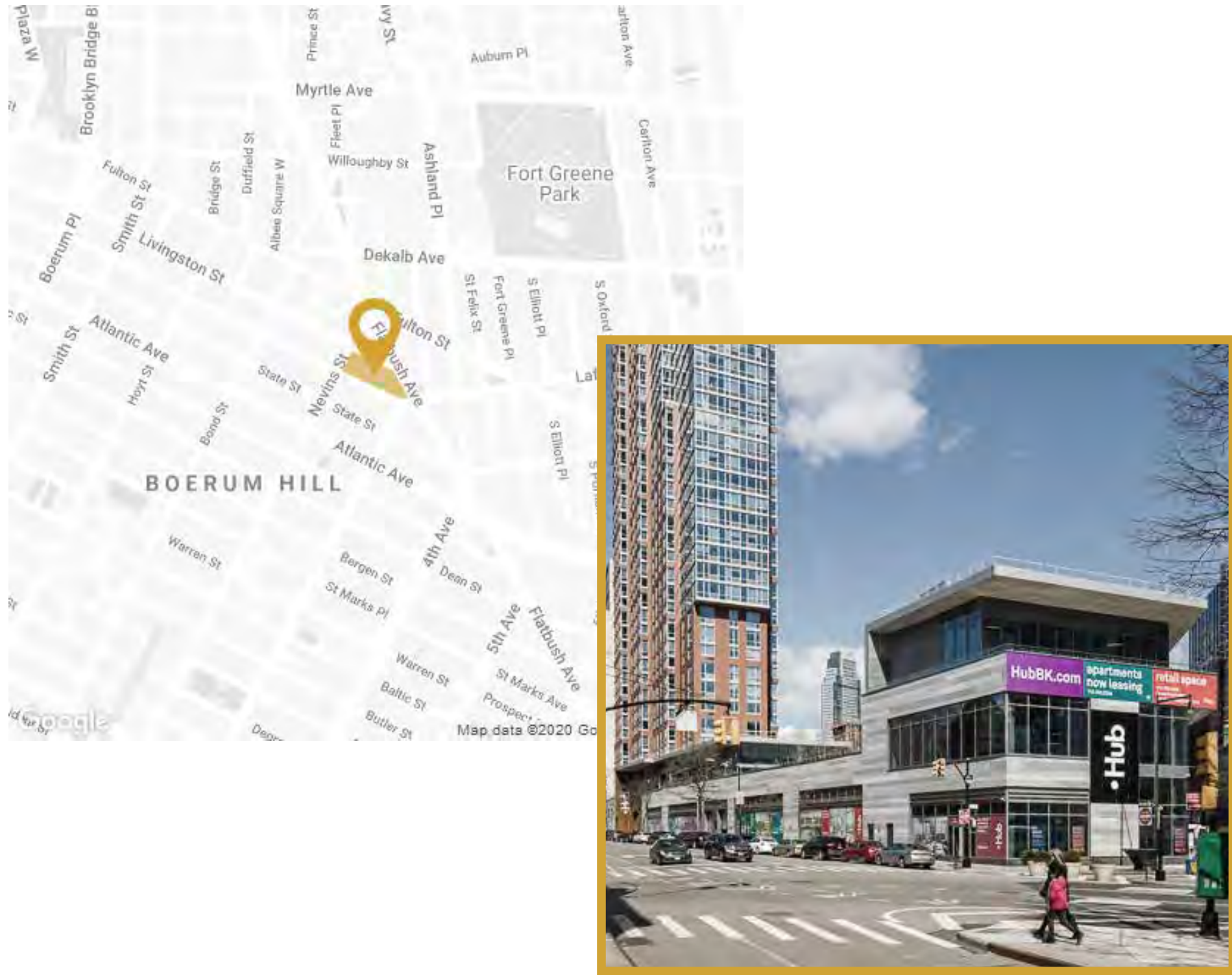


MORGAN SEHI

# CONVERGE

LOCATION: Downtown Brooklyn, NY

Located in Brooklyn, NY, this corporate headquarters for CCG, a non-profit facilitation group, symbolizes the evolution of the workplace in a rapidly transforming world. The COVID-19 pandemic and climate change were both catalysts in the design of this adaptable building. CONVERGE houses a workplace environment that emphasizes the collaborative process between community members and decision-makers, creating a symbiotic relationship. To emphasize the collaborative atmosphere of CONVERGE, the spaces in which individuals come together to problem-solve are central to the building. Combining an established work and co-work environment with the new ground-floor approach, CONVERGE is designed to endlessly progress with its users.



Coffee Shop

## An Adaptable Workplace for the Future:

As larger and more complex issues arise with climate change, our world population is faced with the challenge of mitigating and adapting. Brooklyn, NY has become a target of natural disasters and growing climate threats, but is ill-prepared to create proactive, long-term solutions, such as affordable housing or resilient architecture. When tackling such complicated issues, it is always advantageous to have more perspectives from diverse backgrounds. *Participatory design*, otherwise known as *community-based design*, is the practice of directly involving all stakeholder parties, including those that are traditionally under-represented, such as citizens or citizen action groups.

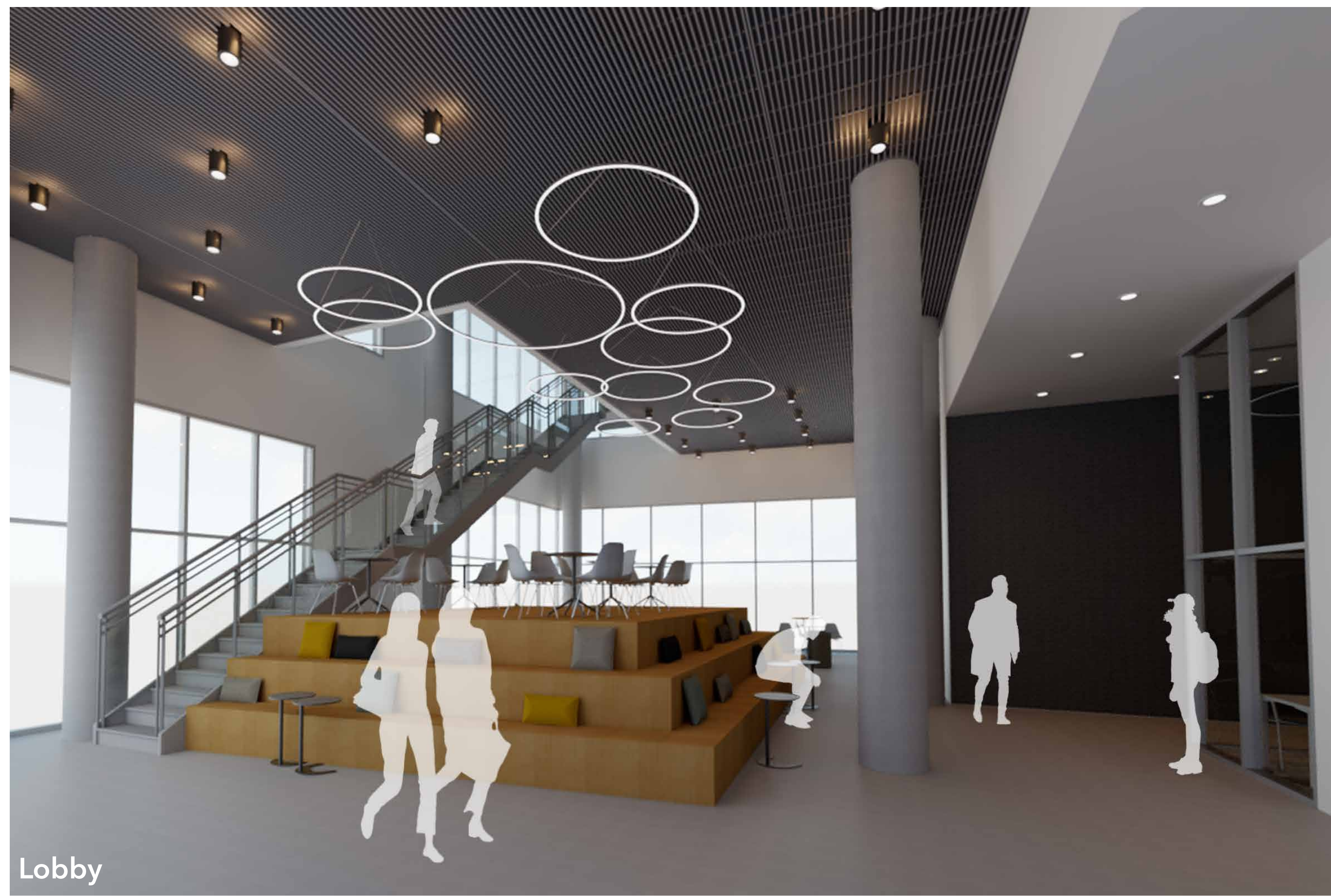
This practice influenced the design of CONVERGE, with a community-engagement emphasis on the ground floor. With CCG housed on the 3rd floor of CONVERGE, the non-profit hosts charrettes, focus groups, events, and more in their flexible public spaces.



### Concept:

**FEEDBACK LOOP (noun)** : a process in which the outputs of a system are used as inputs to create a better overall solution.

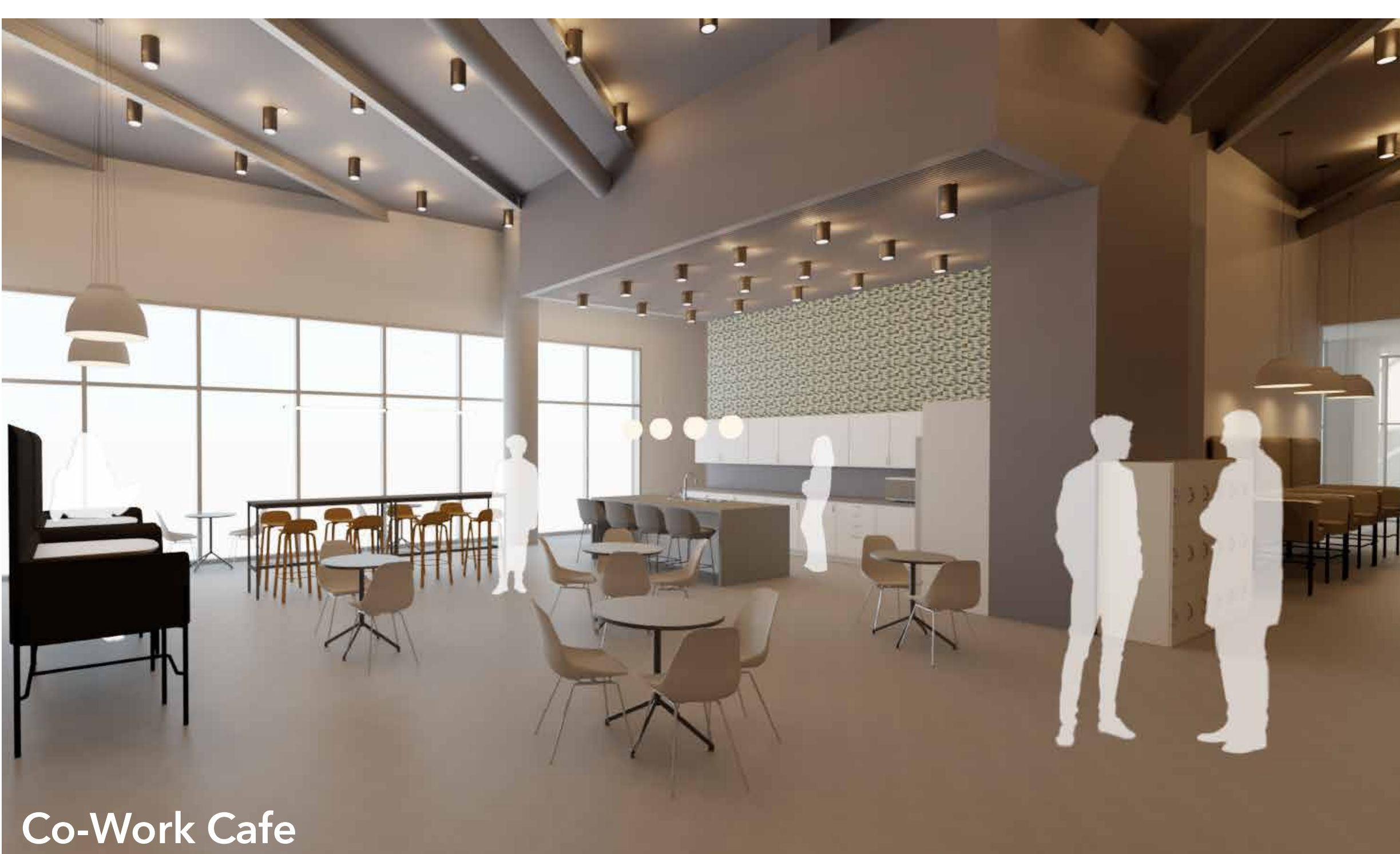
Highlight the spaces that engage users in the iterative process to encourage collaboration and evaluation.



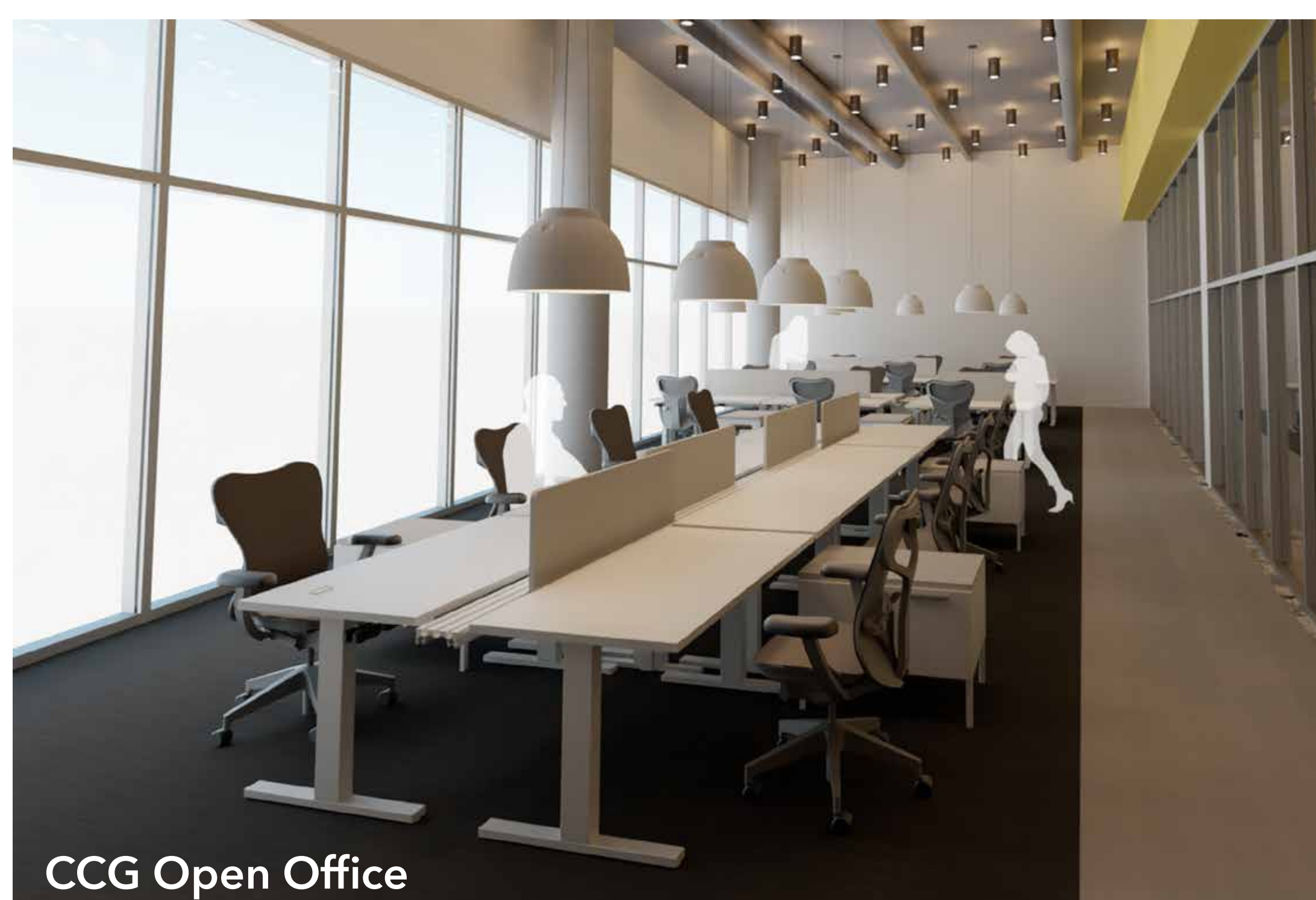
Lobby

### floor plan key

- 1 Lobby
- 2 Co-work Reception
- 3 CCG Reception
- 4 Restrooms
- 5 Lounge
- 6 Flex Workshop Spaces
- 7 Public Forum Hall
- 8 Gallery + Event Space
- 9 Open Co-working
- 10 Rent-able Enclosed Offices
- 11 CCG Open Office
- 12 Executive Offices
- 13 Conference Rooms
- 14 Workroom
- 15 Huddle Rooms
- 16 Touchdown Zones
- 17 Coffee Shop
- 18 Gym
- 19 Locker Rooms
- 20 Bike Storage
- 21 Co-work Cafe
- 22 CCG Cafe
- 23 Wellness Rooms



Co-Work Cafe



CCG Open Office



CCG Reception